

MINDANAO STATE UNIVERSITY



OFFICE OF THE VICE CHANCELLOR FOR
RESEARCH, EXTENSION, AND DEVELOPMENT

MSU MARAWI
RESEARCH AND
DEVELOPMENT
AGENDA

2023 - 2028



Contents

Contents	2
Rationale.....	3
MSU-Marawi Research and Development Agenda 2023-2028	4
R&E Roadmaps of the Colleges	10
College of Engineering	10
College of Fisheries and Aquatic Sciences	11
College of Information and Computing Sciences	12
College of Sports Physical Education and Recreation	13
College of Natural Sciences and Mathematics.....	14
King Faisal Center for Islamic, Arabic, and Asian Studies.....	15
Institute of Science Education.....	16
College of Hospitality and Tourism Management.....	17
College of Health Sciences	18
College of Forestry and Environmental Studies	19
College of Agriculture.....	20
College of Business Administration and Accountancy	21
College of Education	22
College of Public Affairs.....	23
College of Social Sciences and Humanities	24
MSU-Lanao del Norte Agricultural College	25
MSU-Lanao National College of Arts and Trades	26
MSU-Maigo School of Arts and Trades	27
MSU-Buug Campus	28
List of Participants.....	29
Proposed R&E Topics from the Colleges.....	30
Documentation	47

Rationale

In the current global landscape, the advancement of knowledge and its application to the benefit of society and communities through instruction, research, and extension as the main triadic functions of a university, is becoming increasingly important. The Mindanao State University (MSU) is at the forefront of this advancement and therefore endeavored to update and restructure its research and development (R&D) agenda to explore new ideas, test new technologies, develop new products and services, discover, and contribute new knowledge, address the needs of its direct communities, and help achieve the United Nations Sustainable Development Goals (UN SDGs).

MSU Marawi R&D Agenda 2023-2028 was finally crafted under the strong support of MSU System President Atty. Basari D. Mapupuno, with OVPRE and OVCRED officials spearheading, and with the active participation of the college deans and unit heads, chairpersons, research and extension coordinators, and heads of various centers with research/extension /innovation activities such as Shariah Center, Meranaw Cultural Heritage Center, Institute of Peace and Development in Mindanao, Center for Women's Studies, and Center for Local Governance. The process required a comprehensive review of the previous MSU Marawi R&D agenda 2017-2022, the regional MOST-BARMM Priority R&D Agenda, the National Harmonized Research and Development Agenda, the 10-Point Agenda of the present MSU administration, and the 17 UN SDGs. This was significantly followed by a series of consultations conducted with various stakeholders from within and outside the campus to ensure that the updated R&D Agenda is relevant to the current needs, thrusts, goals, and development plans of the university, and its direct communities, namely, the Stakeholders' Consultation with the province of Lanao del Sur, BARMM on May 16, 2023, at Provincial Capitol Complex, and the 1st MSU Marawi R&D Summit on June 15-17 at Sultan Naga Dimaporo, Lanao del Norte.

Thence, the development of new initiatives and identification of new areas of research and extension were outlined and prioritized as themes and subthemes that are informed by the latest findings and trends in the sciences, engineering, technologies, and social sciences giving emphasis on the importance of existing expertise and capabilities of the campus who will discharge the R&D functions while considering the impact of the new agenda to the lives of the direct communities where the Campus is strategically situated and aligning the thematic areas to the challenges set by the UN SDGs. The restructured R&D agenda promotes the creation of an enabling environment for research and extension experts for intra- and interdisciplinary, local, regional, national, and even international collaborations between experts, campuses, universities, HEIs, RDIs, government, and non-government agencies, and the provision of support for programs and projects, access to information, resources, and fundings.

Moreover, the new R&D agenda strives to integrate post-pandemic virtual platforms and new digital technologies for research and extension encompassing processes and methods, state-of-the-art equipment, instruments, gadgets, apps, and high-throughput, cost-effective techniques and approaches in generating and analyzing large amounts of data as well as the adoption of bioethical and legal frameworks such as ethics review, Institutional Animal Care and Use Committee (IACUC) and Institutional Biosafety Committee (IBC) and data privacy. Lastly, the R&D agenda hopes to generate outputs, products, patents, and publications for the global visibility of the university while protecting its intellectual property. In this way, the university can attract more students, experts, partners, funding agencies, and industries for meaningful collaborations, create more jobs and opportunities, and develop new markets for income generation.





MSU-Marawi Research and Development Agenda 2023-2028

I. Human and Community Development

- A. Education
 - 1. Smart schools
 - 2. Promoting Inclusive Education
 - 3. Integration of Education Technology into the Madrasah Education
 - 4. Capacity building program for Madrasah (both technical & management system)
 - 5. Teachers as Curriculum Policy Implementers
 - 6. Monitoring, Assessment, and Evaluation in Education
 - 7. Contextualization of Instructional Materials
 - 8. Child Development and Care Education
 - 9. Positive Parenting Practices
 - 10. Waste Literacy
- B. Peace and Development
 - 1. Ancestral Domains as Basis for Peace, Poverty, Alleviation and Sustainable Resources Use
 - a. Conflict resolution
 - b. Peace studies
 - c. Human security
 - d. Bangsamoro and indigenous peoples struggles
 - e. Islamic culture heritage (eg. Masjids)
 - f. Extant cultural heritage of ethnolinguistic groups
 - g. Documentation of Islamic literature
 - 2. CAB-Normalization Program – rehabilitation, reconstruction and development which address the needs of the BIAF members, internally-displaced persons, and poverty-stricken communities
 - 3. Peaceful and inclusive communities
 - 4. Promoting Peace Education in the BARMM
 - 5. Violent extremism and radicalism in the digital age
 - 6. Women and youth participation in preventing and countering violent extremism and radicalism.
 - 7. Assessment and monitoring of peace and security in the BARMM.
- C. Social Services and Social Protection
- D. Gender and Development and PWD Inclusion
 - 1. Gender-based violence
 - 2. Reproductive Health
 - a. Digitalization of Public Services Delivery
 - 3. Child Protection
 - a. Online Sexual Exploitation of Children (OSEC)
 - 4. Sexual Orientation, Gender Identity and Expression (SOGIE)
 - 5. Mainstreaming Gender Responsiveness
 - 6. Inclusion of the PWD

II. Culture, Tourism, and the Arts

- A. Mapping, Conservation, Preservation and Restoration of Cultural Heritage
 - 1. Cultural mapping of the tangible and intangible cultural heritage
 - 2. Documentation of the weaving and textile industries of the Bangsamoro and Indigenous peoples
 - 3. Documentation, preservation and promotion of the Bangsamoro Indigenous Knowledge Systems and Practices
- B. Halal ecosystem
 - 1. Inventory, monitoring, evaluation, and patenting of the halal practices in the Bangsamoro (food and non-food products)
 - 2. Assessment of the community awareness on the halal chain (from livestock raising until food processing)
- C. Education
 - 1. Preservation and promotion of Islamic and Indigenous heritage
- D. Women and Youth
 - 1. Gender dimensions in the Bangsamoro and IP contexts
 - 2. Women leaders and women's roles and contribution on leadership and governance
 - 3. Culture-sensitive gender and development
 - 4. Capability-building for Women of the Bangsamoro
 - 5. Capability-building for the Youth of the Bangsamoro
 - 6. Cooperatives Development for Women and the Youth
- E. Tourism and Hospitality Business Management
 - 1. Tourism planning and development
 - 2. Destination management and marketing
 - 3. Tourism e-marketing
 - 4. Tour guiding
 - 5. Tourism product and service quality
 - 6. Hospitality service industry
 - 7. Meetings, Incentives, Conventions and Exhibits (MICE)
 - 8. Halal culinary and management
 - 9. Culture-sensitive tourism development
 - 10. Eco-tourism advocacy and promotion in the BARMM/Lanao del Sur

III. Language, Media, and Communication Research

- A. Theoretical and Applied Linguistics
- B. Media Content Research and Innovation
- C. Media and Information Literacy and other 21st Century Literacies
- D. Communication, Campaign and Popularization of Scientific Knowledge
- E. Language Documentation

IV. Industry, Innovation, Infrastructure, Energy and Emerging Technology

V.

- A. Transportation
- B. Energy and Power Generation
- C. Communication and Digital Network
- D. Water and Sanitation
- E. Advanced Materials
- F. Materials For Energy
- G. Nanotechnology
- H. Optics And Photonics
- I. Electronics Industry
- J. ICT Innovations
- K. Industry 4.0
- L. Quantum Technology
- M. Smart Cities, Villages and Communities
- N. Artificial Intelligence
- O. Utilities
- P. Unmanned Vehicle Systems (UVS)
- Q. Metals And Engineering
- R. Start-up Development Program
- S. Technology and Innovation
 - 1. Pre-commercialization, commercialization, or diffusion of R&D outputs
 - 2. Intellectual property development, registration, production, and promotion
 - 3. Innovation facilities and services
 - 4. Innovation culture promotion
 - 5. Innovation policy research
- T. Data Analytics
- U. Data Visualization

V. Sustainable Economic Production, Food Security and Poverty Alleviation

- A. Agriculture
 - 1. High-value Crop production technologies
 - 2. Livestock and poultry production technologies
 - 3. Native animals' production technologies
 - 4. Animal and crop plant diseases
 - 5. Feed resources
 - 6. Development of technologies for farm mechanization, crop processing, animal production and processing
 - 7. Develop value chain for agricultural products.
 - 8. Development and use of organic fertilizers
 - 9. Breeding and enhancement of agricultural and fisheries products
 - 10. Post-harvest processing of high-value crops and fisheries products
- B. Inland Fisheries
 - 1. Resource and socio-economic assessment of lakes, river systems and marshes
 - 2. Stock assessment and enhancement of indigenous freshwater species
 - 3. Application of genomics in breeding and selection
 - 4. Health and disease diagnostics; disease management
 - 5. Upgrading of land-based multi-species hatchery
- C. Marine fisheries
- D. Technological innovations that help farmers
 - 1. cushion the impacts of weather extremes and climate change.
 - 2. reduce production losses.
 - 3. Ensure the quality, freshness, and marketability of agricultural products.



- E. Socio-Economic and Policy Research
- F. Food Security and Safety
 - 1. Assessment of food security and safety
 - 2. Food hygiene and sanitation
 - 3. Chemical and halal analysis of feeds, animal, and aquaculture products
 - 4. Safety analysis of food products and packaging
 - 5. Nutrition studies
- G. Halal (food, medicines, cosmetics, and pharmaceuticals)
 - 1. Halal supply chain
 - 2. Halal standardization, accreditation, and certification systems
- H. Entrepreneurship and social enterprise development
 - i. Assessment of entrepreneurial competencies
- I. Technology Business Incubation Program
- J. Forestry
 - 1. Tree plantation development
 - 2. Non-Timber Forest Products
- K. Circular Economy
 - 1. Green Marketing

VI. The Biological-Physical-Chemical Environment

- A. Lake Lanao, Agus river and other aquatic ecosystems
- B. Ranao-Agus Riverbasin, watersheds, and forests
- C. Iligan Bay, Illana Bay and other marine ecosystems
- D. Agricultural ecosystems
- E. Urban ecosystems
- F. Biodiversity (flora and fauna) and ecosystem studies
 - 1. Genetic analysis
 - 2. Morphological, allelopathic and bioecological studies
 - 3. Carrying capacity models of ecosystems
 - 4. Economic resource assessment and valuation
- G. Mineral Resources
- H. Solid Waste Management
- I. Pollution and rehabilitation studies of degradation of ecosystems
- J. Land-use change assessment and monitoring
- K. Biomass and Carbon stocks estimation and modelling
- L. Green Computing

VII. Health Research and Development

- A. Environmental health and sanitation
 - 1. Challenges in urban drainage system, sanitation, access to potable water and access to sanitary facilities
 - 2. Omics technologies in occupational and environmental health
 - 3. Food safety standardization
- B. Health prophetic education and services
- C. Family health
- D. Health and Climate change
 - 1. Environmental health issues and climate change impacts on health
- E. Health in emergencies
- F. Studies on health systems
- G. Communicable and non-communicable diseases
- H. Mental health
 - 1. Psychological/mental health education

2. Psycho-social factors (eg. Armed conflict) that affect the mental health of the community.
 3. Assessment of mental health and well-being of the students
 4. Utilization of Psychological assessment
- I. Health-seeking behavior
 - J. Health and digital technology
 - K. Emerging and re-emerging diseases
 - L. Anti-microbial resistance
 - M. Studies on cultural and indigenous practices affecting health.
 - N. Policy research
 - O. Sports, physical activity, and recreation as interventions to health problems
 1. Coaching
 2. Sports training
 3. Sports management
 4. Physical fitness assessments and intervention

VIII. Law and Governance

- A. Policy Development
 1. Public policy and local legislation
 2. Public policy analysis and evaluation
 3. Parliamentary Systems of Governance
 4. The Philippine Bureaucratic system
 5. Revenue generation and taxation
 6. Participatory budgeting and planning
 7. Implementation of the Mandanas-Garcia ruling to LGUs
 8. Public-Private partnership
- B. E-governance
 1. Digitalization of public service delivery
 2. Artificial intelligence in the public sphere
 3. Data privacy
- C. Ethics, Transparency and Accountability
 1. Moral governance and ethical leadership
 2. Crisis management and leadership
- D. Legal Research
 1. Shariah law in the Philippines
 2. Islamic Criminal law
 3. Commercial law
- E. Contemporary Issues and Trends in the Muslim World
 1. Islamic banking and finance
 2. Halal industry management
 3. Marriage and divorce
 4. Islamophobia
 5. Islamic reform movements
- F. Global Security, Foreign Policy, Diplomacy and International Relations
 1. International law and security
 - a. Human rights
 - b. International dispute and regional security
 2. International Peace Cooperation and Organizations
 3. Philippine foreign relations
 - a. Bilateral relations
 - b. Multi-lateral relations
 4. War, revolution and peace studies
 - a. WMD
 - b. NPT

5. International political economy
 - a. ASEAN
 - b. BRICS
 - c. One belt one road initiative
6. Emerging trends in international relations
 - a. Post-truth society
 - b. Social movements
 - c.

IX. Basic Research

- A. Pure Basic Research – conduct of fundamental research in the sciences and the humanities which are purely theoretical in scope and heralding disciplinary advances and pioneering works/discoveries.
- B. Policy Research – this provides the science to aid legislation and promote evidence-based policy-making in the country.
- C. Oriented Basic Research – this covers research which seeks new knowledge required for application purposes.

X. Disaster Risk Reduction and Climate Change Adaptation

- A. Observation and monitoring networks
- B. Technology development and application for monitoring
- C. Modelling and simulation for improvement of monitoring and forecasting
- D. Hazards, vulnerability, and risk assessments
- E. Infrastructure
 1. Technology development for DRR and CCA
 2. Development of tech-based systems for monitoring the marine protected areas and ecosystems to assist in enforcing environmental laws.
 3. Assessment of DRR-CCA infrastructure needs
- F. Warning and risk communication
 1. Early warning systems
 2. ICT applications of flooding, earthquake, typhoons drought and other disasters
- G. Technology development and application for climate change mitigation and adaptation
 1. Climate change adaptation for farmers and fisherfolks
- H. Technology development and application for DRRM
- I. Policy research
 1. Assessment of existing programs on DRR-CCA
 2. Development of Barangay or community based DRRM and CCA
 3. Local sustainable practices vis a vis the climate change, environmental phenomena, and resource governance.



R&E Roadmaps of the Colleges



College of Engineering

COLLEGE OF ENGINEERING 5-YEAR R&D ROADMAP 2023-2028

1. Upgrade of CREM - with Services Offered
2. At least 2 publications per dept
3. At least 2 extension projects
4. COERCE with Industry
5. Instigation of ff labs:
 - Responsible Consumption and Production Lab (ABE)
 - Waste Utilization and Material Recovery Lab (DET)
 - Industry and Manufacturing Lab (ME)

1. COE Development Plan
2. Dept. Thematic Research Lab Proposal
3. College Research Manual (CREM)
4. College of Engineering Research Colloquium and Exposure (COERCE)
5. At least 2 publications per dept
6. At least 2 extension projects

1. Apply for Technology Transfer/ Spin-offs/Start-Ups
2. Upgrade of CREM - with TechTransfer
3. At least 2 publications per dept
4. At least 2 extension projects
5. COERCE with Industry-LGU-SMEs
6. Proposal for Specialized Research Centers

03

01

05

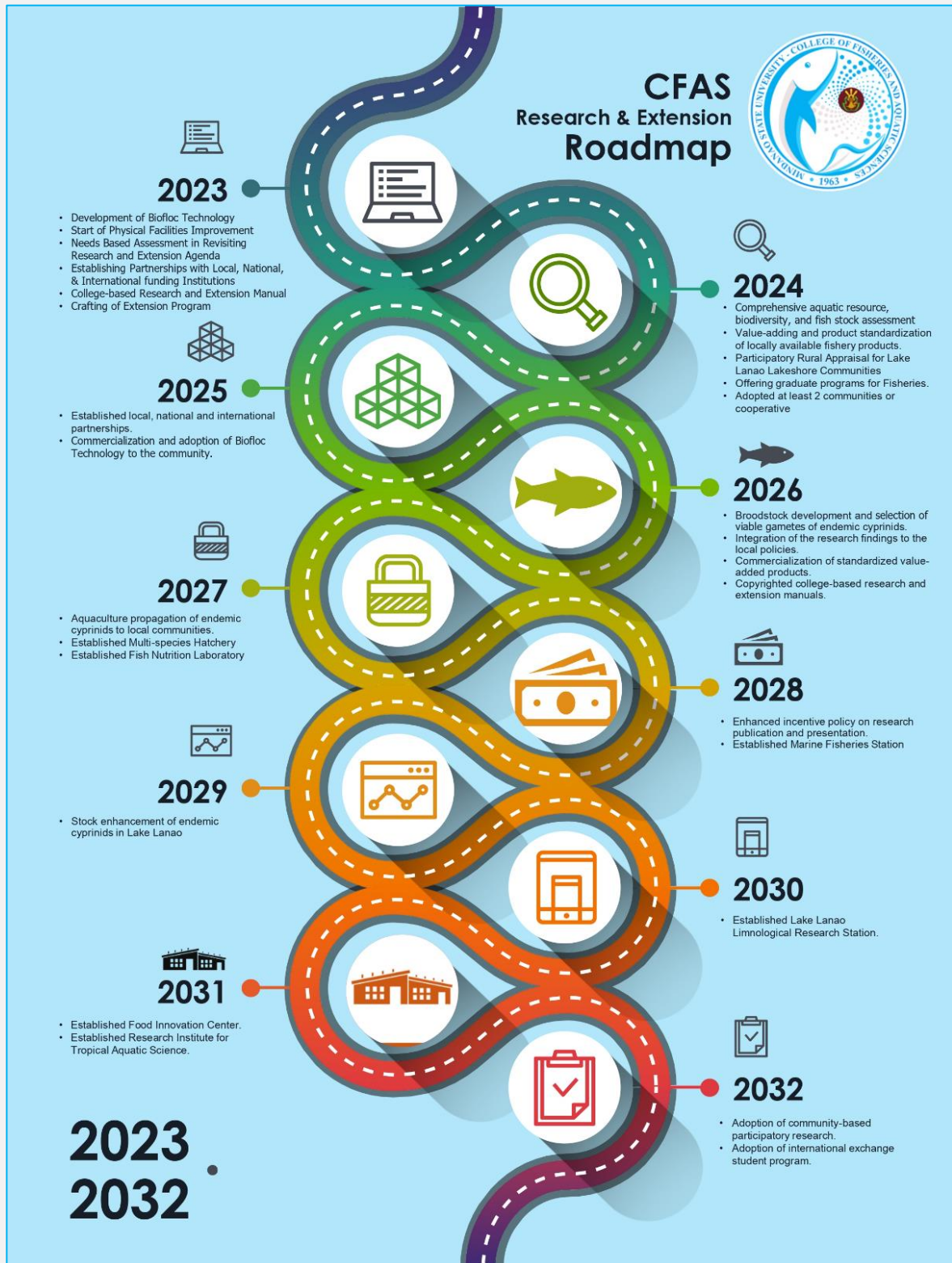
04

1. Strengthen IP Protection - Patent/UM/Copyright
2. Upgrade of CREM - with IP Protection
3. At least 2 publications per dept
4. At least 2 extension projects
5. COERCE with Industry-LGU
6. Upgrading of Labs with partnerships and services offered

02

1. Physical Component of labs
2. At least 2 publications per dept
3. At least 2 extension projects
4. COERCE with LGU
5. Instigation of ff labs:
 - Sustainable Process and Engineering Lab (CHE)
 - Watershed Mngt and Risk Monitoring Lab (CE)
 - Microelectronics Laboratory (EE/ECE)







COLLEGE OF INFORMATION AND COMPUTING SCIENCES

RESEARCH & EXTENSION ROADMAP 2023-2028

1 HUMAN & COMMUNITY DEVELOPMENT

SMART SCHOOL

- Unmasking the Pandemic Paradox: Unraveling the Shift in Academic Performance among IT Students
- RFID Attendance Monitoring System
- Alumni Association Portal
- Online Voting System
- Collection Management System
- Bridging the Gap, Internet Connectivity
- Enrollment Management System
- Grade Management System
- Evaluating The Digital Landscape of Public High Schools in Lanao Del Sur: A Demographic Analysis
- ICT Readiness

ADOPT A SCHOOL

- Lectures Series on Basic Computer Programming
- Programming Crash Course for SHS
- Lecture Series on Productivity Tools - MCNHS

E-GOVERNANCE

- Barangay Management System
- Assessment of ICT Adaptation among Women in Lanao Del Sur

SMART VILLAGE

- Boarding House Management System
- Skilled Worker Profiling System

2 CULTURE, TOURISM & ARTS

- A Knowledge-based Ethno-Medicinal Plant Recommendation for Common Diseases that includes the Preparation of Medicinal Plant in the Meranao Group Community in LDS
- CICSmarter Pro
- Maranao Cultural Preservation through Digitalization
- Soraw O Sulutan: Tale Of The Four Kingdoms Adventure Trivia Game
- A Web-Based Musical Arts Repository System For Cultural Group Of Lanao Del Sur

3 INDUSTRY, INNOVATION, INFRASTRUCTURE, ENERGY & EMERGING TECHNOLOGY

- Deployment of the Speech-to-Speech Machine Translation Application for primary schools in rural areas in Lanao del Sur for an effective language teaching and learning
- Cics Employee Attendance Monitoring System With Multifactor Authentication (Real-Time Generated Qr And Face Recognition)
- Determining the Programming interest among SHS Students in Lanao Del Sur
- Smart Agriculture: Promotive innovative cultivation in Lanao
- The Archive: Compilation of MSU Researches
- Integrated Rubber Information System

4 DISASTER RISK REDUCTION & CLIMATE CHANGE ADAPTATION

- e-Waste to Wealth



5 LAW & GOVERNANCE

- eSindangan: Electronic Portal of the Municipality of Sindangan
- ICT Readiness among Public Officials in Lanao del Sur

6 LANGUAGE, MEDIA AND COMMUNICATION RESEARCH

- A language Framework for the Meranao, Tausog and Maguindaos in the BARMM through Natural Language Processing Framework.

7 BIO-PHYSICO-CHEMICAL ENVIRONMENT

- Aquatic Biodiversity Information System for Lake Lanao
- Developing a GIS-based Data Management Systems for Soil Quality Index of the Agricultural Areas in the Province of Lanao del Sur

Consolidated by:

Prof. Jogie A. Vistal
Research Coordinator

Ms. Jenan Fathma B. Rande
Extension Coordinator

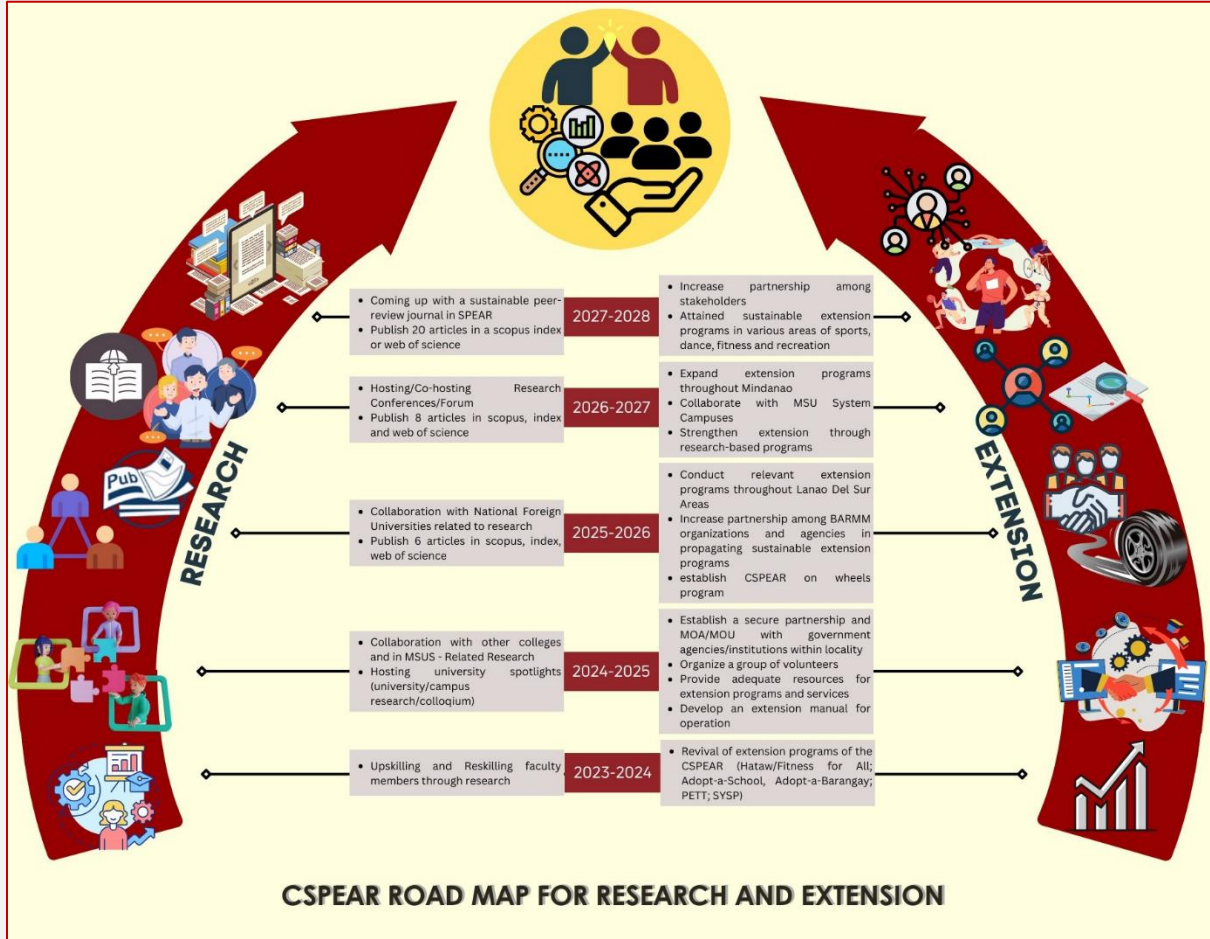
Approved by:

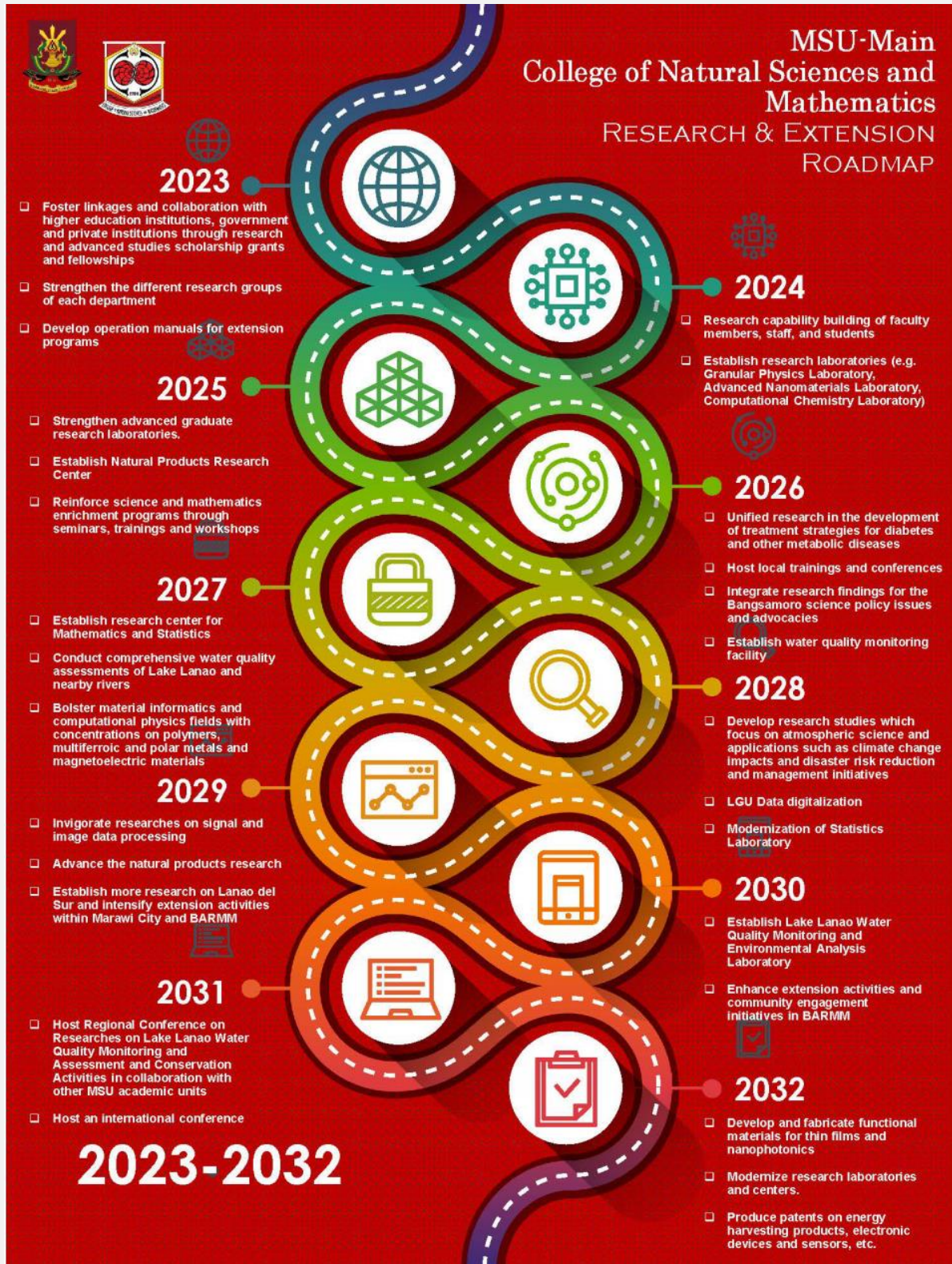
Prof. Mudzma M. Asakil
College Dean





College of Sports Physical Education and Recreation







King Faisal Center for Islamic, Arabic, and Asian Studies

RESEARCH AND DEVELOPMENT

ROADMAP

Year 2023-2028

2023-2024

- Benchmarking at prestigious universities with the Philippines and abroad.
- Establishment of University System Sharia Advisory Council
- Strengthening Linkages in local, regional, national and international concerned agencies and NGO
- Creation of Center Based Research Manual
- Faculty Development Program Plan
- College Research Colloquium
- Established King Faisal Shariah legal clinic

2025

- Established Infrastructure Development Plan
- Conducted Research Teaching Pedagogies for Arabic Teachers
- Offering Advanced studies in International Relations
- Organized National/International Research Conference
- Revival of the Pahang Center for Malay Studies

2026

- Established International partnerships with Universities abroad
- Established King Faisal Sharia Legal Research
- Established King Faisal Research & Journal Publication
- Established King Faisal Advance Professional Studies

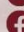
2027

- Established King Faisal Foreign Service Review and Training Services
- Conducted Research on Global Security, Foreign Policy and Diplomacy & International Relations

2028

- International Exchange Faculty & Student Programs
- International Research collaboration with Universities abroad
- Offering MA & Ph.D programs in Islamic Studies, Arabic language & Diplomacy and International Relations
- Center for Excellence, Peace and Development

 kfciaas@msumain.edu.ph

 The MSU King Faisal Center Version 5.0





RESEARCH AND EXTENSION ROADMAP

A Research and Extension Roadmap of Institute of Science Education for 2023-2028



2023-2028

Vision

In line with the vision and mission of the Mindanao State University, the Institute of Science Education envisions to become a leading institution of science and mathematics education in the Philippine archipelago, especially BARMM, deeply committed to the training and development of the teachers and students for academic and moral excellence.

2023-2028

2023

- Creation of College-Based Ethics Review Committee
- Archiving of all Graduate theses and dissertations
- Benchmarking with some research-oriented universities offering Science and Math Education Graduate programs
- Hiring Graduate staff or Graduate assistant with a research orientation to help with the research projects to be implemented.
- Science High School and Graduate School Student Research Colloquium
- Establishing more linkages with CHED and DOST to implement research programs

2023-2028

2026

- Annual strategic planning for research projects
- Training programs for High School teachers and *asatij* on curriculum making and teaching contextualized science and math in *basic* education system.
- Strengthening peacebuilding through Science and Math education research
- Science High School and Graduate School Student Research Colloquium
- Establishing more linkages with CHED and DOST to implement research programs

2023-2028

2024

- Annual strategic planning for research projects
- Identifying the key practices obtained from the benchmarking and implementing it to the Institute research.
- Accreditation of ISED Graduate programs
- Seminar trainings with pre-service and in-service Science and Math teachers on research writing and developing research topics concerning Science and Math Education
- Science High School and Graduate School Student Research Colloquium
- Establishing more linkages with CHED and DOST to implement research programs

2023-2028

2027

- Annual strategic planning for research projects
- Science High School and Graduate School Student Research Colloquium
- Assessment of STEM curriculum in Lanao Del Sur
- Formative Assessment of the implementation of R&D projects from 2023-2027
- Establishing more linkages with CHED and DOST to implement research programs

2023-2028

2025

- Annual strategic planning for research projects
- Incorporate research-based teaching methods unto every Graduate subjects offered in the Institute.
- Assessment of teaching Science and Math in Basic Education of LDS and Marawi City, including *Madaris*.
- Assessment of STEM curriculum in Lanao Del Sur
- Designing and testing research instruments to be utilized by faculty and students for reliable research data.
- Science High School and Graduate School Student Research Colloquium
- Establishing more linkages with CHED and DOST to implement research programs

2023-2028

2028

- Annual strategic planning for research projects
- Establishing more linkages with CHED and DOST to implement research programs





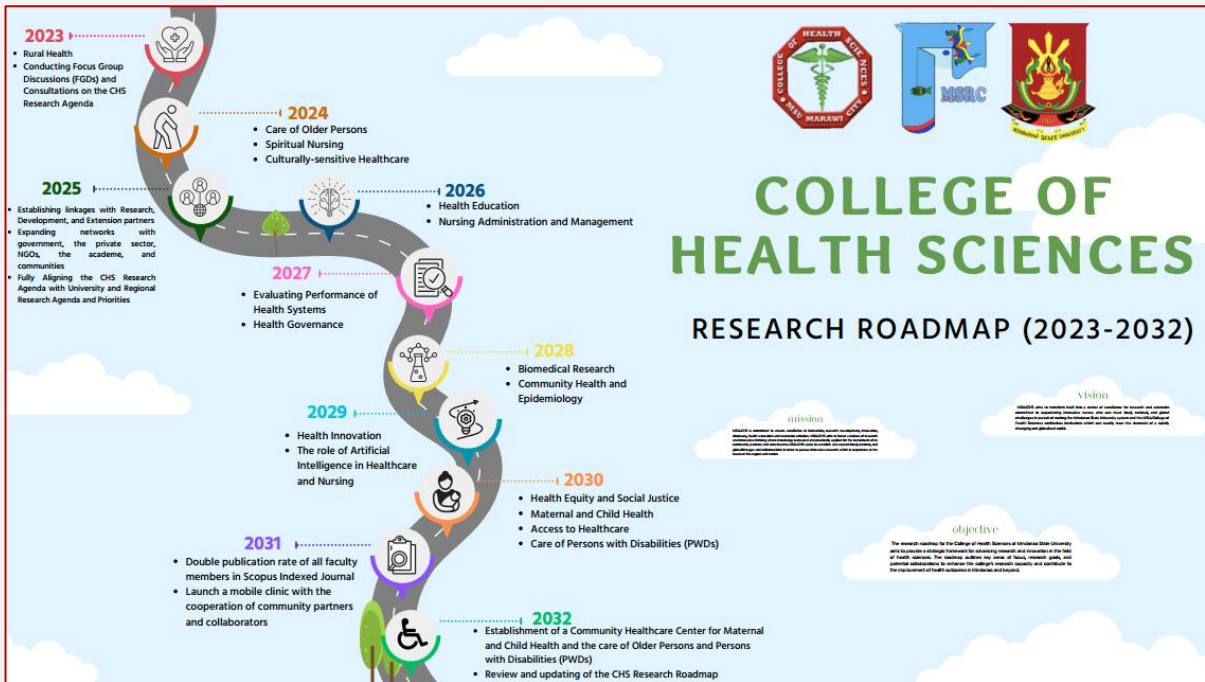
COLLEGE OF HOSPITALITY AND TOURISM MANAGEMENT GENERAL GOALS

The College shall pursue world-class educational programs to align with present realities of ASEAN and Globalization. However, the need to balance knowledge, skills and technology acquisitions is to mold responsive and nationalistic entrepreneur and workers who are globally competitive thereby helping Mindanao and the whole country achieve socio-economic development.





College of Health Sciences



CHS Research and Extension Roadmap for 2023-2032

Mindanao State University - College of Health Sciences,
Marawi City, 9700, Philippines

Mission

MSU-CHS is committed to ensure excellence in instruction, research development, innovation, discovery, health education and extension activities. MSU-CHS aims to foster a culture of research and innovative thinking where knowledge is created and practically applied for the betterment of its community partners and constituents. MSU-CHS seeks to establish and expand local, national, and global linkages and collaborations in order to pursue innovative research which is responsive to the needs of the region and nation.

Vision

MSU-CHS aims to transform itself into a center of excellence for research and extension committed to capacitating innovative nurses who can meet local, national, and global challenges in pursuit of making the Mindanao State University system and the MSU-College of Health Sciences world-class institutions which can readily meet the demands of a rapidly changing and globalized world.

Objective

The research roadmap, developed through consultation with key stakeholders, for the College of Health Sciences at Mindanao State University aims to provide a strategic framework for advancing research and innovation in the field of health sciences. The roadmap outlines key areas of focus, research goals, and potential collaborations to enhance the college's research capacity and contribute to the improvement of health outcomes in Mindanao and beyond.

2023

- Rural Health (Research)
- Conducting Focus Group Discussions (FGDs) and Consultations on the CHS Research Agenda (Research)

Research Focus: Highlighting the health needs of rural communities and addressing obstacles in accessing healthcare.

Goals:

- Investigate the state of rural health within the region.
- Systematically address gaps in the delivery of healthcare services by identifying issues which obstruct the smooth flow of services through research.
- Establish a research committee within the College of Health Sciences to oversee the implementation of the research roadmap.

Potential Collaborations:

- Form partnerships with local government units to get data on the ground in order to assess the state of rural health in region.
- Involve stakeholders in disseminating and improving the research roadmap in order to ensure that it remains relevant to the needs of the constituents.

2024

- Care of Older Persons (Research and Extension)
- Spiritual Nursing (Research)
- Culturally-sensitive Healthcare (Research)

Research Focus: Improving the quality of health service towards older persons and end of life care.

Goals:

- Explore the impact of faith and culture on the quality of life of older persons.
- Develop sensitive nursing care which holistically addresses the needs of patients.

Potential Collaborations:

- Deepen tolerance and understanding within the healthcare profession by reaching out to representatives of different faith-based institutions
- Partner with nursing homes to gain expertise on improving the quality of service for older persons

2025

- Establishing linkages with Research, Development, and Extension partners (Extension)
- Expanding networks with government, the private sector, NGOs, the academe, and communities (Extension)
- Fully Aligning the CHS Research Agenda with University and Regional Research Agenda and Priorities (Research)

Goals:

- Allocate resources for research grants, capacity-building activities, and infrastructure development.
- Regularly evaluate and assess the progress of research projects and their alignment with the roadmap's goals.
- Foster a culture of research by promoting interdisciplinary collaborations, organizing research conferences, and providing mentorship opportunities for faculty and students.

Potential Collaborations:

- Collaborate with local government units to identify the health needs of partner communities.
- Implement extension activities which would address the most pressing needs of the members of the community.
- Partner with non-government organizations, as well as the private sector in order to improve extension activities.

2026

- Health Education (Research and Extension)
- Nursing Administration and Management (Research)

Research focus: Developing effective strategies for health promotion and education. Training students to be part of top-level management responsible for decision-making, planning, and program implementation in healthcare institutions.

Goals:

- Assess the health literacy levels and health-seeking behaviors of the population.
- Design and evaluate health promotion campaigns targeting specific health issues.
- Investigate the use of technology and innovative approaches for health education.
- Teach students management strategies which they can apply in healthcare settings.

Potential Collaborations:

- Collaborate with educational institutions and NGOs to develop and implement health education programs.
- Engage with media organizations to disseminate health information and campaigns.
- Partner with business management institutions to improve the curriculum for the Nursing in Administration course.

2027

- Evaluating Performance of Health Systems (Research)
- Health Governance (Research)
- Strengthening Health Systems and Policies (Research)

Research focus: Assessing and improving the effectiveness of health care delivery systems and policies in Mindanao.

Goals:

- Conduct studies on health care delivery system performance, health governance, and policy analysis.
- Identify barriers and propose strategies to enhance access to quality healthcare services.
- Evaluate the impact of health policies on vulnerable populations.

Potential Collaborations:

- Collaborate with local government units and health agencies to gather data and implement evidence-based policies.
- Partner with other academic institutions and research centers to share knowledge and best practices.

2028

- Community Health and Epidemiology (Research)
- Biomedical Research (Research)

Research focus: Addressing community health needs and understanding disease patterns in the region. Advancing biomedical research in the region.

Goals:

- Conduct epidemiological studies to identify prevalent diseases and risk factors.
- Investigate the social determinants of health and their impact on marginalized communities.
- Design and evaluate community-based interventions to promote health and prevent diseases.

- Investigate emerging biomedical technologies and their potential for improving healthcare outcomes.

Potential Collaborations:

- Collaborate with local health centers and community organizations to gather data and implement interventions.
- Establish partnerships with other research institutions to exchange expertise and data for comparative analysis.
- Collaborate with industry partners and research institutions to access funding and resources for biomedical research.

2029

- Health Innovation (Research)
- The role of Artificial Intelligence in Healthcare and Nursing (Research)

Research focus: Fostering innovation in healthcare. Discovering practical use for emerging technologies and artificial intelligence in healthcare.

Goals:

- Conduct translational research to bridge the gap between basic science discoveries and clinical applications
- Develop local capacity for the production of medical devices and diagnostic tools.

Potential Collaborations:

- Establish partnerships with medical device manufacturers and startups to support innovation and technology transfer.
- Coordinate with think tanks to develop training programs and seminars on the use of emerging technologies and the use of generative AI in the field of healthcare.

2030

- Health Equity and Social Justice (Research)
- Maternal and Child Health (Research)
- Access to Healthcare (Research)
- Care of Persons with Disabilities (PWDs) (Research and Extension)

Research focus: Addressing health disparities and promoting equitable access to healthcare services.

Goals:

- Investigate the root causes of health inequalities and develop interventions to reduce disparities.
- Study the impact of cultural, social, and economic factors on health outcomes.
- Advocate for policies and practices that promote health equity and social justice.

Potential Collaborations:

- Collaborate with community-based organizations and advocacy groups to understand local contexts and develop targeted interventions.
- Engage with policymakers and government agencies to influence health equity agendas.

2031

- Double publication rate of all faculty members in Scopus Indexed Journals (Research)
- Launch a mobile clinic with the cooperation of community partners and collaborators (Extension)

Goals:

- Train all faculty members, regardless of position, to be familiar with the publication process and to produce quality research which can be translated into policy and action.
- Set-up a mobile clinic with the help of partners which would cater to the most vulnerable in the community.

Potential Collaborations:

- Leverage networks with fellow institutions and universities in order to maximize trainings for faculty members to capacitate them to independently pursue groundbreaking and innovative research.
- Coordinate with non-governmental organizations and government in order to mobilize resources necessary to set up a mobile clinic as part of the institution's extension activities.

2032

- Establishment of a Community Healthcare Center for Maternal and Child Health and the care of Older Persons and Persons with Disabilities (PWDs) (Extension)
- Review and updating of the CHS Research Roadmap (Research)

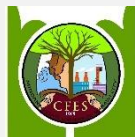
Goals:

- Build upon the previous project of implementing a mobile clinic by establishing a community healthcare center.
- Periodically review the research roadmap to align with emerging health challenges, technological advancements, and evolving research priorities.
- Continuously assess the research roadmap's relevance and effectiveness in contributing to the improvement of health and well-being in the region.

Potential Collaborations:

- Collaborate with government institutions at the local, regional, and national level in order to get the funding and resources necessary for the establishment of a community healthcare center.
- Convene with the Mindanao State University System as well as the Regional Government to ensure that the research roadmap remains aligned with the priorities of the region, and to update it as needed.





College of Forestry and Environmental Studies

CFES 5-YEAR RESEARCH, EXTENSION AND DEVELOPMENT ROADMAP

YEAR 2023

Research	Extension	Development
Conduct needs assessment with stakeholders.	Review conducted research	Community needs assessment of MSU barangays and other selected stakeholders
Conduct capability building of College researchers for proposal preparation for funding and writing articles for journal submission		Initiate college colloquium with stakeholders and recognition of College research and development outputs
Intensify baselining studies, stoping, and environmental profiling.	Biodiversity and Utilization; Environmental Pollution	IEC dissemination Capacity building of stakeholders
Actively seek collaborations particularly with local stakeholders.		IEC material production
Establish experimental sites (laboratory forest) as required in the CHED Memorandum Order on Forestry C	Conduct field exposures and field trials in laboratory forests	MOU/MOA with LGUs and MENRE
Enhance extension programs based on conducted/finished research.		MOU/MOA with NPC, MSU BLGUs, PLGUs, MENRE on environmental pollution, biodiversity, IEC, capability building, etc.

YEAR 2024

Research	Extension	Development
Sustain extension programs on environmental pollution & biodiversity	Establish permanent biodiversity monitoring plots. Community organizing activities. MOU/MOA for R&E collaboration with SUCs, research agencies	
Conduct capacity building on preparing training modules.		Production and copyrighting of training modules.
Improve GIS laboratory and establish bio-energy research facility.	Intensify related research for the establishment of the Bio-energy Research Center and GIS Center	Capacity building of selected stakeholders.
Incorporate research and extension activities in graduate and undergraduate syllabus in line with MSU R&D Agenda and College R&D Roadmap	Conduct college research in line with course syllabus, R&D agenda, and CFES R&D Roadmap	Production and copyrighting of IMs
Initiate policy reviews of local and regional environmental laws.	Conduct and publish policy studies on forestry and environmental laws.	Present and lobby outputs from policy review/studies. Policy brief
Increase baselining and field trial studies.	Climate Change & DRRM Natural Resources Valuation & Carrying Capacity	IEC dissemination. Capacity building of stakeholders Semestral research colloquium and annual recognition of research outputs. IEC material production

YEAR 2025

Research	Extension	Development
Sustain research and extension programs on environmental pollution & biodiversity		Community mobilizing and technology transfer. Establish additional demo farms and permanent plots in Lanao del Sur.
Sustain research and extension programs on climate change & DRRM, and natural resources valuation & carrying capacity	Climate Change & DRRM Natural Resources Valuation & Carrying Capacity	Capability building of LGUs on assessing carrying capacity of local tourism sites and DRRM
Establish a Bio-energy Research Center and GIS Center		Policy briefs and localized manuals.
Continue improvement of laboratory facilities particularly for biodiversity research, utilization of timber and non-timber forest products	Intensify related research for the establishment of the biodiversity museum	
Assess of implemented extension programs	Preliminary impact assessment of extension implemented programs on environmental pollution and biodiversity	Community dissemination and validation

YEAR 2026

Research	Extension	Development
Sustain extension program.		Technology transfer, livelihood development and community adoption
Intensify collaboration for research with SUCs and research agencies.		MOU/MOA with SUCs and research agencies
Assess the implemented extension programs	Impact assessment of implemented extension programs on environmental pollution, biodiversity, climate change & DRRM, and natural resources valuation & carrying capacity	Community dissemination and validation
Establish/Improve facility for research on timber and non-timber forest products.	Conduct additional research on forest resource utilization studies.	

YEAR 2027

Research	Extension	Development
Conduct needs assessment with stakeholders for new research agenda.	Review conducted research and extension programs.	Community needs assessment of MSU barangays and other selected stakeholders.
Improve and intensify research and extension for timber and non-timber forest products.	Conduct additional research on forest resource utilization studies.	Technology transfer, livelihood development and community adoption of forest resource utilization studies.
Assess sustainability of extension programs.	Impact assessment of implemented extension programs on environmental pollution, biodiversity, climate change & DRRM, and natural resources valuation & carrying capacity	Community dissemination and validation

Revisit RD for 2023-2027 and plan for next RD agenda.





RESEARCH AND EXTENSION ROADMAP
(AY 2023 – 2028)

No.	Research & Extension Programs / Agenda	Components		In-charge / Team Involve	Remarks
		R	E		
1	Community assessment on farmers' practices of major crops, poultry and livestock production in Lanao del Sur in collaboration with MAFAR and other Research agencies	/	/	AEX Dept.	
	a. Pest management of major crops in Lanao del Sur	/	/	AEX , PSD	
	a.1 Rice, corn, sorghum, "adla"	/	/	AEX , PSD	
	a.2 Leguminous crops (peanut, soybeans, mungbean, field beans)	/	/	AEX , PSD	
	a.2 "Sakurab", tomato, lettuce, cabbage, spices and other vegetables	/	/	AEX , PSD	
	a.3 Fruits (banana, durian, marang, jackfruit, lanzones etc.)	/	/	AEX , PSD	
	a.4 Root crops (cassava, camote, yam, etc.) crops	/	/	AEX , PSD	
	a.5 Plantation & Industrial crops (abaca, coconut, rubber etc)	/	/	AEX , PSD	
	a.6 Beverages and herbal plants (coffee, cacao, etc)	/	/	AEX , PSD	
	b. Soil physico-chemical and biotic properties of crop production areas in Lanao del Sur	/	/	AEX , PSD	
	c. Utilization of soil amendments for crop production in the marginal areas of Lanao del Sur	/	/	AEX , PSD	
	d. Morphological and genetic characterization of local crop varieties in response to varying biotic and abiotic stresses (i.e. climate change) in Lanao del Sur	/	/	PSD	
	e. Farmers' perception on climate change in crop and livestock production	/	/	AEX	
	f. Marketing and value-adding strategies of local farmers on various fieldcrops	/	/	ABM , AEX	
	g. Indigenous Knowledge system in seed selection and seed processing of major crops in Lanao del Sur	/	/	AEX, PSD, ABM	
	h. Post-harvest and food processing practices of Meranaos in Lanao del Sur	/	/	AEX, PSD, ABM	
	i. Enhancement of farmers' skills and technical know-how in crop protection, post-harvest and food processing	/	/	AEX, ABM	
2	Abaca production status and marketing studies in Lanao del Sur	/	/	ABM, AEX, PSD	
	a. Morphogenetic analysis of commonly grown abaca (<i>Musa textilis Nee</i>) in Lanao del Sur, BARMM	/	/	PSD	
	b. Abaca virus screening in various nursery and field production areas in Lanao del Sur using LAMP and ELISA Technology (Biotech research)	/	/	PSD	
	c. Integrated pest management of abaca in major production areas in Lanao del Sur	/	/	PSD	
	d. Marketing assessment and value chain analysis of abaca production in Lanao del Sur	/	/	ABM, AEX	
3	Varietal improvement and product value-adding of Rice and Corn in Lanao del Sur	/	/	ABM, AEX, PSD	
	a. Morphogenetic analysis of local corn and rice cultivars in Lanao del Sur	/	/	PSD	
	b. Breeding improvement of potential local rice / corn varieties in Lanao del Sur	/	/	PSD, AEX	
	c. Role of Meranao women in rice and corn production and value-adding of products in Lanao del sur	/	/	ABM, AEX, PSD	
4	Coffee Production: Status, productivity and Value- adding of Products in Lanao del Sur, BARMM	/	/	ABM, AEX, PSD	
	a. Assessment of Coffee production in Lanao del Sur, BARMM	/	/	ABM, AEX	
	b. Capacity building of Muhajiddens and Ex-MILF combatants in coffee production and postharvest activities (Kapehintod)	/	/	AEX, ABM	
	c. Indigenous knowledge system (IKS) of Meranao farmers in coffee postharvest and processing in Lanao del Sur	/	/	AEX, PSD, ABM	
	d. Morpho-genetic characterization of local coffee varieties in Lanao del Sur, BARMM	/	/	PSD	
	e. Marketing problems in coffee production among small-scale and medium-scale farmers of Lanao del Sur.	/	/	ABM, AEX	
5	Poultry and Livestock Production in Lanao del Sur, BARMM	/	/	ANS, AEX	
	a. Production of Halal Feeds (Total Mix Ration) for Poultry and Livestock Production in Lanao del Sur	/	/	ANS, AEX	
	b. Phenotypic Characterization and Genetic analysis of Native Chicken and goat of Lanao del Sur, BARMM	/	/	ANS	
	c. Capacity building of farmers as "para doctors" for poultry and livestock animals diseases in Lanao del Sur, BARMM	/	/	ANS, AEX	
	d. Establishment of Breeding Hub for Livestock Animal	/	/	ANS, AEX	
	e. Training in artificial insemination among livestock animals	/	/	ANS, AEX	
	f. Native chicken and livestock production in Lanao del Sur	/	/	ANS, AEX	
	g. Deworming, vitamin injection and vaccination of poultry and livestock animals in Lanao del Sur	/	/	ANS, AEX	
	h. Castration, dehorning and dehoofing of livestock animals (goat)	/	/	ANS, AEX	
	i. Forage crops establishment and silage making	/	/	ANS, AEX	
	j. Capacity building in Dairy food processing	/	/	ANS, AEX, ABM	
	k. Training on Halal (meat) food products certification	/	/	ANS, AEX	





CBAA Research & Development Roadmap (for 5 years implementation)

R & D Program Title	Target Date of Implementation	Department/ Person Responsible
Integration of Islamic Accounting and Islamic Finance <ul style="list-style-type: none"> - Islamic Microfinance Institutions - Institutionalization of Zakat Institutions - Islamic Financial Markets in the Philippines - Islamic Insurance Industry - Islamic Waqf and other related financial services 	Annual Recurring Program	1. Accountancy Department 2. Economics Department 3. Management Department 4. Marketing Department
Invigorating Islamic Commerce and Halal Industries <ul style="list-style-type: none"> - Socioeconomic Impact of Halal Industry in BARMM and Mindanao - Halal Food Production and Value Chain Analysis - Readiness of Philippine Market towards Halal Goods - Critical Success Factors of Halal SMEs - Halal Accreditation by BARMM - Islamic Corporate Social Responsibility 	Annual Recurring Program	1. Accountancy Department 2. Economics Department 3. Management Department 4. Marketing Department
Responsive and Innovative Business and Accounting Education <ul style="list-style-type: none"> - Assessment of Senior High ABM Teachers in Lanao del Sur - Employability Studies among Graduates - Innovations in Teaching and Student Assessment - Support Training for Senior High ABM Teachers in Lanao del Sur - Assessment of Certified Public Accountant Licensure Examinations Results - Business Orientation & How to start and Manage a Small Business - Seminar/Training on Basic Business Management Skills - Simple Bookkeeping - Basic Customer Service Training 	Annual Recurring Program	1. Accountancy Department 2. Economics Department 3. Management Department 4. Marketing Department
<ul style="list-style-type: none"> - Promoting Ethics and Best Practices in Business - Career Guidance and Promotion of the Business Profession - Leadership and Social Responsibility Skills Training 		
Support Studies to Various Government Agencies, NGOs and Host Communities (Feasibility Studies, Operational Analysis, etc) <ul style="list-style-type: none"> - Creation of University Techno-Hub and incubation business center - MSME's and Social Enterprises studies - Promoting Financial Literacy for Financial Independence (Financial Literacy / Personal Finance) - Cooperative Support Studies - Baranggay Financial Report Literacy 	Annual Recurring Program	1. Accountancy Department 2. Economics Department 3. Management Department 4. Marketing Department





ROADMAP FOR RESEARCH AND EXTENSION PROJECTS

Rationale

The College of Education recognizes the importance of research and extension projects in advancing knowledge, improving teaching practices, and contributing to the development of the community. Through research, knowledge-based is advanced and re-engineered. Access to research thrust and priorities contributes to the fast-paced development in technology-driven society. These research findings are translated to extension and outreach community-based programs to affirm, revitalize information-based and technology-driven societal changes and innovations. Production becomes the quadratic function.

This roadmap aims to promote interdisciplinary collaboration, address societal needs, and enhance the quality of education within our degree programs. By allocating resources to these projects, we can foster innovation, promote scholarly growth, and establish our college as a leader in educational research and community engagement.

Research Projects

- 1. Department of Elementary Teaching** (BECEd and BEEd)
 - Assessment of the Integration of Maranao Stories in the Learning Materials Used in Teaching the Mother Tongue- Based Multilingual Education (MTBME): Basis for Material Enrichment, Production and Utilization
- 2. Department of Secondary Teaching** (BSEd-English, BSEd-Filipino, BSEd-Mathematics, BSEd-Sciences and BSEd-Social Studies)
 - Investigating the Role of Folklore and Indigenous Literature in Promoting Cultural Identity and Appreciation among Junior High School Students
 - Examining the Role of Service-Learning in Developing Civic Engagement and Active Citizenship among Junior High School Students
- 3. Department of Home Economics** (BTLEd and BTVEd)
 - Needs Assessment of Halal Food Production Practices among Meranaos' Food Establishments: Basis for Development of Learning Module in Home Economics

- 4. Department of Graduate Education** (Ph.D. Educational Management, MAED-Reading, MAED- Educational Management, MAED- Guidance and Counseling)
 - Assessment and Policy Formulation for Enhancing the Implementation of the School Improvement Plan in BARMM
 - Assessing the Implementation of the MBHTE-BARMM Learning Resources: Exploring Issues, Challenges, and Suggestions for Policy Development

Extension Projects

Each department will undertake extension projects in collaboration with local schools, communities, and educational organizations. These projects will focus on addressing specific needs and providing support to stakeholders through various activities such as workshops, training programs, community engagements and outreach initiatives.

Implementation and Funding

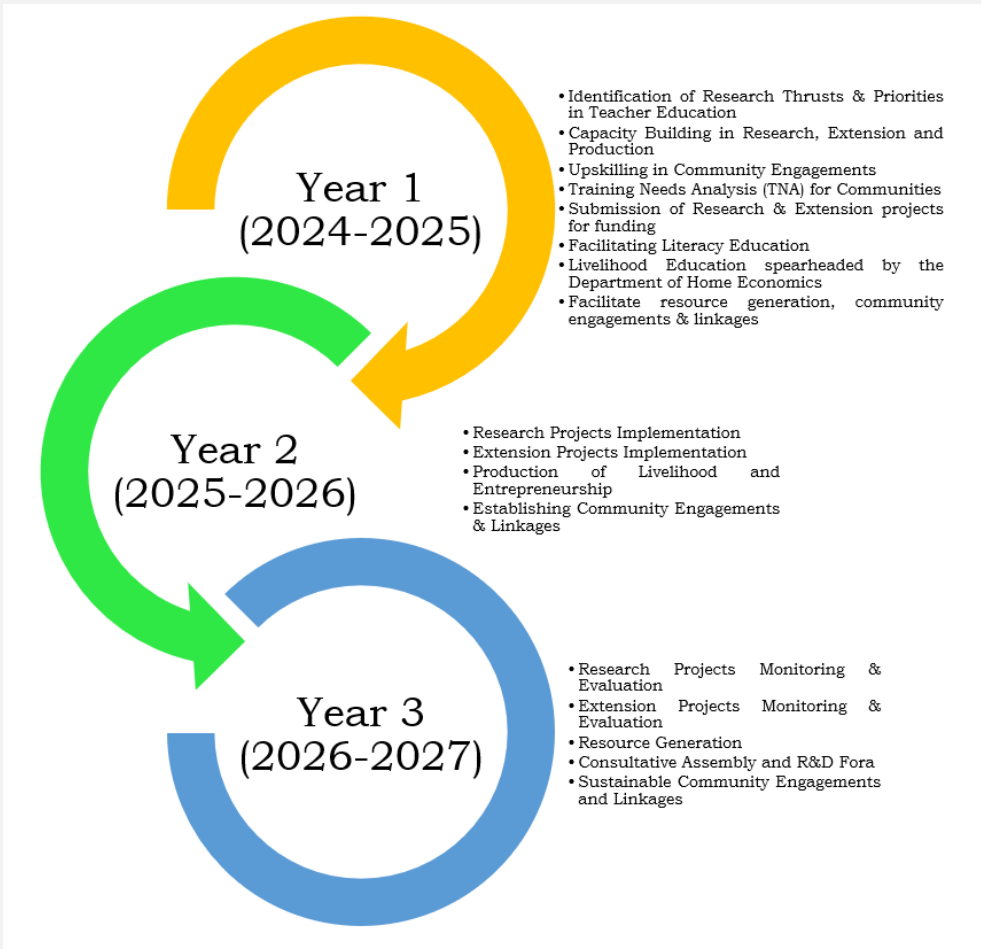
To implement this roadmap successfully, the College of Education will establish a Research and Extension Committee composed of faculty members from each department. The committee will oversee the planning, execution, and evaluation of research and extension projects. Funding for these projects will be sought through a combination of internal grants, external funding opportunities, and partnerships with government agencies, NGOs, and industry stakeholders.

Monitoring and Evaluation

Regular progress reports and evaluations will be conducted to assess the impact and effectiveness of the research and extension projects. Evaluation can in a form of

realistic and responsive evaluation to assess if the target needs are being addressed and resolved. Clarificative and participatory evaluation will also be utilized to ensure consistency between the program design and implementation. Rapid appraisal, Delphi Method and 360° Feedback are the methods that will used. The findings from these evaluations will inform future project planning, resource allocation, and strategic decision-making within the College of Education.

By adopting this comprehensive roadmap, the College of Education will strengthen its research and extension capabilities, contribute to knowledge creation, and make a meaningful impact on the education sector and the broader community. This roadmap will position our college as a hub for innovation, collaboration, and excellence in education.





College of Public Affairs



Republic of the Philippines
MINDANAO STATE UNIVERSITY
College of Public Affairs
Marawi City

**College R&D
ROADMAP
2023-2027**

GOAL: To institutionalize a comprehensive, integrated and demand-driven research, extension, and development programs focused on good governance, sustainable community development and social welfare services.

2023	<ul style="list-style-type: none"> Restructured Research and Development Unit Creation of college-based research and extension manual. Foster inclusive community engagement through active participation and collaboration between the university and local communities to identify community needs, aspirations, and priorities. Creation of College-Based Research Database
2024	<ul style="list-style-type: none"> Establish more linkages to development partners (local & international) for outsourcing/generation of funds and/or technical assistance. Strengthen ties with alumni for Research and Extension undertakings as respondents or co-researcher, and as resource person/facilitator in extension activities. Establishing linkages/networking for team/collaborative researches College-based research colloquium/in-house research review conducted twice a year Research and Extension Proposals: <ul style="list-style-type: none"> Inventory and Profiling of CSOs, Nonprofit Organizations and Humanitarian Institutions in Marawi City Community Profiling: Unveiling the Socioeconomic Landscape and Needs of Bangsamoro Communities Unveiling the Resilience of Meranaw Communities in Lanao del Sur: Embracing Indigenous Knowledge System for Effective Disaster Preparedness and Management Assessing the role of local governance in peace building efforts and promoting sustainable institutions Reconciliation in Post-Conflict Societies: Challenges and Prospect for BARMM Towards Sustainable Peace and Order Assessing the Levels of Integration of Anti Online Sexual Abuse and Exploitation of Children (OSAEC) in the Bachelor of Science in Social Work Curriculum in the Philippines Level of Satisfaction of MSU-Marawi Bachelor of Science in Social Work Students on their Field Practice and Instruction Experience: The Case of Batch 2021 and 2022 A Tracer Study of Graduates of Bachelor of Science in Social Work Program of Mindanao State University-Marawi Initiate and Advance Sustainable Development Education and Sustainable Practices in Basic Education Schools and Tertiary Institutions in the Peripheral Barangays of MSU Academic Zone Environmental Stewardship Education Campaign Empowering communities through participatory planning, capacity building, and consciousness raising on issues affecting them.
2025	<ul style="list-style-type: none"> More linkages established with extension-oriented agencies Copyrights application for all research outputs Conduct conference/forum for information dissemination of research outputs Research and Extension Proposals: <ul style="list-style-type: none"> Explore Collaborative Undertakings with the Multipartite Humanitarian-CSO-NGO Network Community Profiling: Unveiling the Socioeconomic Landscape and Needs of Bangsamoro Communities The Women's Narrative on Gender-based Violence in Lanao del Sur Profiling of Persons with Disability (PWD) and Children with Disability (CWD) and Subsequent Assessment for Intervention and Support Services in Marawi City Research on Payment for Environmental Services in Lake Lanao Analyzing the Governance Structures and Mechanisms in the Autonomous Regions of the Philippines Assessing the role of local government units in promoting sustainable development and achieving the sustainable goals (SDGs) in the Philippines Interprofessional Collaboration in Working with OSAEC Victim-Survivor : Gaps, Challenges and Levels of Participation The Rise of Bachelor of Science in Social Work Programs in Marawi City: A Multiple Case Study Initiate and Advance Sustainable Development Education and Sustainable Practices in Basic Education Schools and Tertiary Institutions in the Peripheral Barangays of MSU Academic Zone Environmental Stewardship Education Campaign
2026	<ul style="list-style-type: none"> Promote sustainable development, social transformation and good governance through series of trainings and seminars for local government units' capability enhancement. Increased number of research publications Research and Extension Proposals: <ul style="list-style-type: none"> Participatory Appraisal for Local Development Planning in Lakeside Brgys. of District 1 of Lanao del Sur Community Profiling: Unveiling the Socioeconomic Landscape and Needs of Bangsamoro Communities Perception of Meranaw on LGBTQIA+ Inclusivity Training Needs Analysis Across People's Organization in Lanao del Sur as Basis for Livelihood Programs Investigating the role of civil society organizations in promoting good governance in the Philippines Understanding the Impact of Devolution on Local Governance in the Philippines Supervision of Social Work Student-Intems : The Case of Mindanao State University Empowering communities through participatory planning, capacity building, and consciousness raising on issues affecting them.
2027	<ul style="list-style-type: none"> Sustained linkages to development partners Sustained college-based research colloquium Sustained programs for promoting sustainable development, social transformation, and good governance. Research and Extension Proposals: <ul style="list-style-type: none"> Participatory Appraisal for Local Development Planning in Lakeside Brgys. of District 2 of Lanao del Sur Community Profiling: Unveiling the Socioeconomic Landscape and Needs of Bangsamoro Communities Comprehensive Baseline Study on Consumption Pattern and Waste Disposal Practices of Communities in Lanao del Sur: Input for Ecological Plan Examining the legal and governance mechanisms for promoting gender equality and women's empowerment in the Philippines The role of Public-Private Partnerships in Infrastructure Development in the Philippines: Legal and Governance Perspectives Assessing the capacity, resources, and governance mechanisms at the local level for implementing sustainable development policies Assessing the Contribution of the Social Work Department in Realizing Selected Sustainable Development Goals (SDG) Goals
	<ul style="list-style-type: none"> Strengthen Community Partners through enhance leadership and governance, organizational capacity building and community engagement and mobilization Comprehensive Baseline Study on Consumption Pattern and Waste Disposal Practices of Communities in Lanao del Sur: Input for Ecological Plan Environmental Governance and Climate Change Adaptation Strategies in the Philippines: A Policy Analysis Legal Frameworks for Data Privacy and Cybersecurity in the Philippines: Compliance Challenges and Recommendations Valuation of Community Organizing Strategies Relevant for the Maranaw Context A Study on the Impact of Empowered CD Alumni in the Realm of Development Sector Advocating the growth of Green Businesses and sustainable Entrepreneurship





College of Social Sciences and Humanities

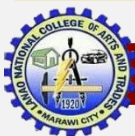


Republic of the Philippines
COLLEGE OF SOCIAL SCIENCES AND HUMANITIES
 Mindanao State University Main Campus
 Marawi City, Lanao del Sur 9700

COLLEGE RESEARCH AND EXTENSION ROADMAP 2023-2028

RESEARCH AND EXTENSION THEMES	Components		Team	2023	2024	2025	2026	2027	2028
	Research	Extension							
1. Human and Community Development									
A. Information and Multimedia Institute	✓	✓	Communication and Media Studies (CMS) Department						
B. Library Innovation and Records Management System	✓	✓	LibScie Department						
C. Disaster Risks in Libraries in BARM Region		✓	LibScie Department						
D. Creation of Mental Hub		✓	Psychology Department						
E. Establish Testing Areas for Schools for Career Guidance		✓	Psychology Department						
F. Create Psychology Laboratory Spaces for Research		✓	Psychology Department						
G. Establishment of Bangsamoro Studies Center	✓	✓	History Department						
H. Google Analytics-Digital Collection Usage	✓	✓	LibScie Department						
I. Physical, cognitive, and psychosocial well-being of women survivors of domestic violence	✓	✓	Psychology Department						
J. Psychological impact of stigma and discrimination against LGBT	✓	✓	Psychology Department						
K. Development, implementation, and evaluation of clinical interventions for women survivors of domestic violence and LGBT		✓	Psychology Department						
L. Establishment of a psychological testing center		✓	Psychology Department						
2. Culture, Tourism and Arts									
A. Writing Bangsamoro History Textbook with Merano Translation	✓	✓	History Department						
B. BARM Wide History Colloquium		✓	History Department						
C. Local History Writing and Workshop	✓	✓	History Department						
D. Webinar on Philippine History and Historiography		✓	History Department						
E. Gogodan: Mindanao History Journal	✓	✓	History Department						
F. BILANTADI: Virtuous Women in the Merano Society and Their Role in Peace-building	✓	✓	Philosophy Department						
3. Language, Media and Communication Research									
A. Creation of PALI (Philippine Association of Language Teachers) Lanao del Sur Chapter	✓	✓	English Department						
B. Creation of Language, Culture and Literature Research Clinic	✓	✓	English Department						
C. Establishing a peer-reviewed and indexed International Journal Language, Literature and Culture	✓	✓	English Department						
D. Establishing a Biennial International Conference on Language, Literature and Culture	✓	✓	English Department						
E. Filipino Department Research Colloquium	✓	✓	Filipino Department						
F. Guideline Pocketbook for Research Methods in Language, Literature and Culture	✓	✓	Filipino Department						
G. Scientific and Technical Writing in Filipino	✓	✓	Filipino Department						
H. Filipino Translation for Research Training for Faculty and Students	✓	✓	Filipino Department						
I. Media & digital literacy needs in various communities (AKAP studies)	✓	✓	CMS Dept						
J. Strategies in addressing organizational communication issues & problems	✓	✓	CMS Dept						
K. Media content production, monitoring, evaluation, and AI	✓	✓	CMS Dept						
L. Legal & ethical dilemmas in news & entertainment media content production	✓	✓	CMS Dept						
M. Regular seminars/trainings/workshops on MIL & other 21st century literacies for identified groups/communities		✓	CMS Dept						
N. Collaborations with relevant agencies for intervention activities to address identified organizational communication issues & problems	✓	✓	CMS Dept						
O. Collaborations with media agencies for laboratory or experimental multimedia productions (print, radio, TV, film, etc.)	✓	✓	CMS Dept						
P. Partnerships with relevant organizations to propose intervention strategies to address identified media content & production dilemmas & issues	✓	✓	CMS Dept						
Q. Establish an Information & Multimedia Institute	✓	✓	CMS Dept						
4. Health Research and Development									
A. Development and Evaluation of Clinical Intervention for Mental Health Care	✓	✓	Psychology Department						
B. Predictors of Various Domains for Health Well-being and Resilience	✓	✓	Psychology Department						
C. Psychological Health and Well-being for Mental Healthcare for Advancement and Understanding of Behavioral Processes	✓	✓	Psychology Department						
D. Prevalence and correlates of the psychological and behavioral processes in mental health and mental healthcare	✓	✓	Psychology Department						
E. Development, implementation, and evaluation of clinical interventions promoting positive mental health	✓	✓	Psychology Department						
F. Establishment of a mental health hub	✓	✓	Psychology Department						
G. Translation of research evidence into policy and practice by health and other services		✓	Psychology Department						
5. Law and Governance									
A. Strengthening Barangay Governance for the Development of Effective, Accountable, and Inclusive Institutions	✓	✓	Political Science Department						
B. Improve barangay governance and build effective, accountable, and inclusive institutions in Marawi City	✓	✓	Political Science Department						
C. Evaluate the Current State of Barangay Governance: Thoroughly examine the selected barangays' existing governance structures, processes, and practices.	✓	✓	Political Science Department						
D. Design and Deliver Capacity-Building Program: Create and deliver capacity-building programs that are tailored to the specific requirements of barangay officials, community leaders, and people	✓	✓	Political Science Department						
E. Promote Participatory Governance Processes: Create procedures and forums for inclusive and participatory decision-making in the barangays	✓	✓	Political Science Department						
6. Basic Research									
A. Exploring the Metaphysics of Presence Between Actual and Virtual Learning	✓	✓	Philosophy Department						
B. Synthesizing the Ethical Theories: A Comprehensive Analysis and Evaluation of the Merano Practice of RIDO	✓	✓	Philosophy Department						
C. Research Agenda Setting	✓	✓	Filipino Department						
D. Semestral Mentorship Program for Faculty and Students	✓	✓	Filipino Department						
E. Produce English Research Manual	✓	✓	English Department						
F. Inventory of Filipino Research Themes	✓	✓	Filipino Department						
G. Graduate Research Colloquium	✓	✓	Graduate Department						
H. Adopt a school for Graduate Program proposal	✓	✓	Graduate Department						
I. Develop a Graduate Research Manual	✓	✓	Graduate Department						
J. Establishment of a Multi-Disciplinary Research Center	✓	✓	Graduate Department						
K. Psychological processes through the lens of various theories and areas (e.g., abnormal psychology, clinical psychology, social psychology, developmental psychology, industrial psychology)	✓	✓	Psychology Department						
L. Design and establishment of the validity and reliability of psychological scales and measures	✓	✓	Psychology Department						
7. Disaster Risk Reduction and Climate Change Adaptation									
A. Energy-related behaviors of the community population	✓	✓	Psychology Department						
B. Knowledge, attitudes, and practices on climate change and related issues	✓	✓	Psychology Department						
C. Translation of research evidence into policies and strategies for disaster risk reduction and climate change adaptation		✓	Psychology Department						





Mindanao State University
Lanac National College of Arts and Trades (LNCAAT)
Marawi City

RESEARCH & DEVELOPMENT ROAD MAP (2023-2025)

Rationale

MSU-LNCAAT envisions to become a center of excellence in technical education and skills development, to improve the quality of life of the people not only in Lanao del Sur, but also of Mindanao. Hence, it is the mission of the Research and Extension Office to undertake relevant research and extension services for the acceleration and streamlining technology transfer in the different vocational courses to meet the needs and manpower requirement of the local, national and global markets.

Further, in view of the need to harmonize with Mindanao State University System in the goal of internationalization, the Research and Extension Office is presently progressing into a function unit in the campus which addresses relevant concerns necessary to realize the vision, mission, goals and objectives set for the development and success of the Campus and Mindanao State University System at large.

Thus, the following strategic objectives with its various activities serve as the beginning stages (a road map) for the campus to undertake in achieving the mandates of Mindanao State University System, and in attaining the dream to be part of the World Ranking University.

Strategic Objective 1: **Develop an enabling research environment**

Baseline Year: **2023**

1. Conduct a Campus Research and Extension Consultation with faculty members
 - Target Date: June 22, 2023
 - Submission of Working Titles: June 29-30, 2023
2. Conduct a writeshop/workshop (mentoring of faculty-researchers)
 - Target Date: July 4 (I), 2023
3. Crafting of first batch research proposals
 - Target Date of Submission: July 17-21, 2023
4. Lobbying of Incentives of faculty-researchers to the Campus Administration
5. Seeking collaboration within the system campuses and other agencies
 - Duration: August-December 2023
6. Data gathering/implementation of the MSU-OVCRED (internally-funded) approved proposals
 - Duration: August-December 2023
7. Year-end Consultation/Status Update Meeting
 - Target Date: December 2023

People Involved: R&D Coordinator, Extension Coordinator, Dean of Instruction, Academic Planning Officer, Department Chairpersons, Faculty-Researchers, School Administration

Strategic Objective 2: **Produce research outputs and implement research-based extension services**

Baseline Year: **2024**

1. Presentation of **completed** research outputs to the R&E Committee
 - Target Date: March 2024
2. Presentation of research outputs/articles in regional, national and/or international forums
 - Target Date: April-June 2024
3. Publish research outputs/articles in CHED-recognized and/or SCOPUS-indexed journals
 - Target Date: July-September 2024
4. Implementation of the research-based extension services
 - Target Date: October-December 2024
5. Year-end Consultation/Status Update Meeting
 - Target Date: December 2024

People Involved: R&D Coordinator, Extension Coordinator, Dean of Instruction, Academic Planning Officer, Department Chairpersons, Journal & Publication Coordinator, Faculty-Researchers, School Administration

Strategic Objective 3: **Monitor the research-based extension services utilized by the beneficiaries and increase research outputs**

Baseline Year: **2025**

1. Monitor the research and extension services utilized by the beneficiaries
2. Craft a second batch research proposals
 - Duration: February-April 2025
3. Conduct a campus research colloquium
 - Target Date: May 2025
4. Data gathering/implementation of the MSU-OVCRED (internally-funded) approved proposals and others
 - Duration: June-November 2023
5. Year-end Consultation/Status Update Meeting
 - Target Date: December 2025

People Involved: R&D Coordinator, Extension Coordinator, Dean of Instruction, Academic Planning Officer, Department Chairpersons, All Other Coordinators, Faculty-Researchers, School Administration





MSU-MSAT Research, Development and Innovation Road Map

MSU-MSAT ROADMAP on RDI

Identify the potential research areas where the university is capable, talented and capable

Review existing RDI projects and activities

Identify research areas for Technology and Innovation

Develop RDI projects

Monitor/Review RDI Projects

Generate Income/Revenue

Engage Stakeholders: Industry, LGUs, Community

Assumptions: Will be recognized as one of the strong universities in Region XI relative to Research and Innovations (2023-2028)

Overview

The office of Research is the responsible for promoting, managing, overseeing, and evaluating the Institute's research endeavors.

General Objectives:

- Develop a strong research culture in the University
- Keep track on the recent updates about research both local and international to cope up with the global demands.
- Help in the execution, monitoring, and assessment of officially approved research projects and other RDI activities
- Promote collaborative/participatory research and other RDI efforts with other research and academic institutions, industries, and organizations.
- Create financial sourcing and funding methods for Institute RDI projects and initiatives.
- Utilize the research outputs for the consumption of the relevant end-users.
- Incline the universities RDI projects with the LGU long-term development plans
- Align the universities RDI projects with the vision of the Country

Faculty Research

Faculties are selected from the university's several departments, and they use their knowledge and original ideas to do research only for the benefit of the institution.

[Manual on Research and Extension \(PDF\)](#)

Faculty Research Database

Student Research

The students will contribute to the university's goal to promote, generate, enhance and develop the researches for the institute.

- Graduate Research Database
- Undergraduate Research Database

Research Area Priorities

One of MSU-MSAT's priority as a rising institution is to contribute to the demands of the country through the conduct of innovation researches, collaborative, and/or autonomous studies, which will produce outputs that will be utilized by people in the society to help the economy to sustain.

1 ICT Digitalization

software development/system development, ICT integration

- This area represents 25–35% of the scientific publications and university education in the field of information and communications technology (ICT) and digitalization in the country. Thus, it is top priority of the National Development
- Research in ICT and digitalization relates to both theory and practice: computational and mathematical sciences, software and hardware technologies, secure communications, digital media, services, and engineering and management across technologies and industrial sectors.

2 INDUSTRIAL INNOVATIONS

product innovations, metal works, electrical and electronics integration, civil technology material analysis, automotive works.

- One of the strength of MSU-Maigo is the Bachelor of Industrial Technology programs which is unique to the university. Having researches and innovations in the said field would boost the flagship level of the program.
- BIT faculty and students are known to be good in shops and output productions. Thus, resources such as machinery is already available in the campus making it easier to produce innovations.

3 GENDER AND DEVELOPMENT

Gender equality; GAD sensitivity and awareness; men's and women's health concerns; gender chances to reduce gender disparities; and gender empowerment.

- Framework to compare the relative advantages and disadvantages faced by women and men in various spheres of life, including the family, workplace, school, community and political system.
- Universities across the country are expected to exercise researches about GAD which is also backed up by Magna Carta of Women (Republic Act No. 9710), (GAD) as the development perspective and process that is participatory and empowering; equitable, sustainable, free from violence, respectful of human rights, supportive of self-determination and actualization of human potentials.

5 EDUCATION PEDAGOGIES

Quality education research that is inclusive, innovative, and equal.

- The principles of teaching are constantly evolving; collaborative learning, flipped learning and deep learning are all a mainstay of the modern classroom. Thus, research in the field of education must always be updated.
- MSU-Maigo being known to produce globally competitive educators should engage in research to discover new teaching approaches and strategies to cater the demand of education.

6 ECONOMICS EDUCATION

Business Readiness, Enterprise Development, Livelihood and Employment

- The economics of education is a wide-ranging and growing sub-field of economics. It encompasses topics such as research on returns to education in the labour market, efficiency of the education "industry", effects of education on the growth of economies, and educational finance.

7 PEACE AND GOVERNANCE

Governance issues in health and environmental management; Political issues and implications in energy commercialization and distribution; contextualization of science and technology for the promotion of peace among multi-cultural communities; cultural, religious and linguistic studies;

- The Peace and Governance Programme contributes to the promotion of sustainable peace and good governance. It organizes and supports research that produces policy-oriented recommendations for current problems, and identifies longer-term trends and patterns in international politics that hold implications for peace, security and governance.
- It is also a mandated course in the University System. Thus, research about peace is also encourage and expected output in each MSU Campuses





MSU-Buug Campus



Republic of the Philippines
MINDANAO STATE UNIVERSITY - BUUG CAMPUS
 College of Arts and Sciences
 Datu Panas, Buug, Zamboanga Sibugay



CAS Research and Extension Roadmap (2023-2027)

Research and Extension Themes	Component		Research Team	Year of Implementation
	Research	Extension		
Research Areas:				
1. Zamboanga Peninsula Subanen Communities – 2023-2027				
2. Resiliency to Disaster – 2023-2027				
3. Teenage Pregnancy and Suicide Incidents – 2023-2027				
4. Gender & Development – 2023-2027				
5. CAS as Hub for Research Collaboration – 2023-2027				
6. Peace and Development – 2023-2027				
Thematic Areas:				
1. Human and Community Development				
2. Culture, Tourism and Arts				
3. Language, Media and Communication Research				
4. Sustainable Economic Production, Food Security and Poverty Alleviation				
5. Health Research & Development				
6. Law and Governance				
I. MSU-Buug as Hub for Preservation of Subanen Language & Culture			All CAS faculty	2023-2027
A. Subanen Language				
i. Language Mapping	/			
ii. Language Documentation	/			
iii. Language Vitality	/			
iv. Language Teaching		/		
B. Subanen Culture				
i. Material	/			
ii. Non-Material	/			
C. Peace-Loving Nature of the Subanen: A Ramification to the Sustainable Peace and Order Condition of Zamboanga Peninsula	/			
D. Strengthening Current and Exploring New Collaboration for R&E Partnership		/		
i. NCIP/IPMR		/		
ii. DepEd				
a. Adopt a School				
II. Zamboanga Sibugay Disaster Awareness, Preparedness and Response			All CAS Faculty	2023-2027
A. Community-Based and Self-Help Psychosocial Intervention Program during Disasters	/	/		
i. Preparedness	/			
ii. Response		/		
iii. Recovery		/		
B. Psychological First-Aid for Schools		/		
III. Prevalence of Teenage Pregnancy and Suicide related incidents Among High School Students			All Cas Faculty	2023-2027
i. Teenage Pregnancy Prevention Program		/		
ii. Race Against Suicide		/		
IV. LGBTQ			All CAS Faculty	2023-2027
i. Seminars on Financial Literacy		/		
ii. Mental Health related Issues	/	/		
iii. Self-Care		/		
V. Strengthening of Research Collaboration				2023-2027
A. College of Agriculture				
B. College of Forestry and Environmental Science				
C. College of Public Affairs				
D. College of Hospitality Management				
E. College of Information Technology				
F. College of Education				
G. College of Fisheries				
H. Senior High School Department				
I. Junior High School Department				

Research Areas:				
7. Communication and Media Studies -2023				
8. Philippine English -2024				
9. World Englishes- 2025				
10. Language, Culture, and Gender Studies- 2026				
11. Language Pedagogies, Programs and Policies-2027				
A. Underpinning the Fundamentals of Language thru Communication and Media Studies	/	/	All English faculty/ Filipino Faculty	2023
1. Discourse Analysis	/	/		
2. Genre Analysis	/	/		
3. Semiotic Analysis	/	/		
4. Translation Studies	/	/		
5. Contrastive Rhetoric	/	/		
6. Corpus Analysis	/	/		
7. Metadiscourse Analysis	/	/		
8. Language Branding	/	/		
9. Business Communications	/	/		
10. Web Content Writing	/	/		
11. Language and Advertising	/	/		
B. Exploring Philippine English thru Language Literature	/	/	All English faculty/ Filipino Faculty	2024
i. Grammar	/	/		
ii. Orthography	/	/		
iii. Phonology	/	/		
iv. Morphology	/	/		
v. Semantics	/	/		
vi. Syntax	/	/		
vii. Vocabulary	/	/		
viii. Lexicon	/	/		
ix. Regional Literature	/	/		
x. Philippine Literature	/	/		
C. Delving into Varieties of English and World Englishes toward Internationalization	/	/	All English faculty	2025
1. American English	/	/		
2. British English	/	/		
3. African English	/	/		
4. Australian English	/	/		
5. Canadian English	/	/		
6. Asian Englishes	/	/		
D. Promoting Language, Culture, and Gender Studies	/	/	All English faculty/ Filipino Faculty	2026
1. Gender Fair Language	/	/		
2. Vitality of Indigenous Languages	/	/		
3. Language Interference	/	/		
4. Politically Correct Languages	/	/		
5. LGBTQIA Lingo	/	/		
6. Sexism in Language	/	/		
7. Linguistic Mapping	/	/		
E. Fostering Language Pedagogies, Programs and Policies	/	/	All English faculty	2027
1. Bilingualism	/	/		
2. Multilingualism	/	/		
3. Translanguaging	/	/		
4. Code-switching	/	/		
5. Language Teaching Assessment	/	/		
6. Curriculum Development	/	/		
7. English Language Teaching Approaches and Methods	/	/		
8. English for Specific Purposes	/	/		
9. Stylistics	/	/		
F. Strengthening Current and Exploring New Collaboration for R&E Partnership	/	/	All English faculty	2027
i. LGU-Buug	/	/		
ii. Department of Education	/	/		
iii. CHED R-9	/	/		
iv. Department of English of MSU-Marawi	/	/		
v. Department of English of MSU-IIT	/	/		
vi. Other Universities and Colleges	/	/		
vii. Agencies for Business Process Outsourcing	/	/		
viii. Online English Education for Global Platforms	/	/		





List of Participants

MSU Marawi

1. Abdul Jabbar Lucman
2. Abdullah C. Ismael
3. Abdul-Nasser D. Lomantong
4. Abubacar Alauya Ali
5. Adelyn S. Nalla
6. Ainnie Gangco
7. Aisah Jamayesah A. Hadji Jamel
8. Alejandro Gonzaga, Jr.
9. Alejandro M. Gonzaga Jr.
10. Alican M. Pandapatan
11. Alyanah Pantao
12. Amierison Castro Tilendo
13. Aminah M. Disamburun
14. Annabella Villarino
15. Anne Fatimah G. Latip-Mangondato
16. Annie Mae C. Berowa
17. Anville Shamaign A. Villanueva
18. Ashnor C. Mascara
19. Aslaine T. Macatanong
20. Ayesha-Maruki A. Macarambon
21. Bai Salam M. Ibrahim
22. Carimah M. Usman
23. Christine Eula S. Baylon
24. Claire Salvedia
25. Corazon Mangelen
26. Dania B. Munder
27. Dexter C. Canalita
28. Diamond N. Tawano
29. Edna J. Mira-ato
30. Efrén Jone J. Oledan
31. Else J. Buca
32. Fema M. Abamo
33. Glen A. Lorenzo
34. Hamdi Muhyuddin D Barra
35. Hamdoni Pangandaman
36. Hedayah M. Macarambon-Gote
37. Hendely Arreza Adlawan
38. Ian John Belgira
39. Jahara A. Solaiman
40. Janice F. Wade
41. Jayson Leigh M. Segovia
42. Jenan Fathma Rande
43. Jhonny Jim S. Ouano
44. Jhumar O. Jamis
45. Jocelyn P. Aman
46. Jogie A. Vistal
47. Johani Balt Andig
48. Johari Mohammad Rakiin
49. Joseph C. Sieras
50. Juhaira A. Sarip
51. Juliet C. Bangi
52. Kim Taburada
53. Lei May Dalaten
54. Leilannie M. Pangcatan
55. Lhemar Jon M. Violango
56. Ma-ann M. Camarin
57. Mahid M. Mangontarum
58. Mahid M. Rachman
59. Maria Cellesty R. Alenton
60. Maria Ninotchka M. Herrera
61. Mariz Jor P. Garcia
62. Mark Gregory Q. Rule
63. Maruhom-Jalaluddin A. Ronsing
64. Mary Jade Palisbo
65. Melencio C. Jalova Jr.
66. Merell P Billacura
67. Mohammad Faizar Y. Alonto
68. Mohammad Jihan M. Macarambon
69. Mohammad-Yusoph P. Mapia
70. Monaimah Gubat Manabilang
71. Mudzna M. Asakil
72. Muslimen B. Guiapar
73. Najeb B. Pendiaman
74. Nelieta Arnejo Bedoya
75. Nestor G. Acala
76. Nico A. Caballes
77. Nor-ainnie G. Gabriel
78. Norhanifah Dibagulun Guro
79. Norhanimah M. Mangondato
80. Normallah C. Abubakar
81. Nur Zaman M. Macadindang
82. Rakim B. Casnor
83. Rayno Vic B. Janayon
84. Rhuhayma D. Lantong
85. Rohanie M. Sultan
86. Saddam Mangondato Solaiman
87. Salamah Basher Indad
88. Samsodin P. Lalanto
89. Sean Wilfred B. Cayunda
90. Sittie Apepah B. Panggaga
91. Sittie Hayna M. Cauntongan
92. Sittie Nadjerah Macagaan Marohom
93. Sitty Aynah P. Mala
94. Sohra C. Sharief
95. Soraidah P. Bangkero-Ali
96. Sorhaila Latip-Yusoph
97. Visminda L. Detalla
98. Wafa Cali
99. Wardah D. Guimba
100. Warren G. Caneos
101. Wyrlo Acosta Ricablanca
102. Ysmael Alongan B. Mangorsi
103. Zahannie D. Abdulrahim

MSU LNAC

114. Aaron D. Manabat
115. Adelfa C. Acala
116. Bongbong U. Busran
117. Chelame M. Navas
118. Christian Jayson L. Tuba
119. Dr. Alimoden L. Pido
120. Dr. Gloria E. Bandala
121. Ethel Theresa O. Alvia
122. Janice T. Ignacio
123. Jonhniel Esguerra
124. Jonhniel P. Esguerra
125. Kristine Ros Talagtag
126. Lessie Mae D. Mata
127. Lyn Marie S. Serino
128. Melanie N. Arpay
129. Melchor D. Toylo
130. Naimah G. Batugan
131. Nelaída H. Kapirog
132. Nhor Intizar B. Pumbagul
133. Nolan R. Yap Jr.
134. Ronil E. Tacujan
135. Saharlin E. Mindalano
136. Zehaida L. Pido

MSU Buug

104. Bryan L. Bitantos
105. Carmelita Balbosa
106. Ivy F. Amante
107. Jalil E. Benito
108. Jennifer Villastique Castillano
109. Jether P. Sumpo
110. Mary Anne M. Polestina
111. Prince Muhammad Gritzko M. Disomimba
112. Rosienie D. Gallardo
113. Rovy M. Banguis

MSU LNCAT

147. Malano Macalabo Tingara-an
148. Noron Cabugatan Somalipao
149. Sittie Sohayrah Cadalay Maca-alang

MSU MSAT

138. Ferlyn C. Aboy
139. Florita C. Lascuna
140. Glitz Wyn Victor T. Sobisolo
141. Javer C. Borngo
142. June Floy C. Bongcawil
143. Margarita C. Paghasian
144. Omar I. Cauntongan
145. Reggie H. Baguio
146. Veldin A. Talorete Jr.

MSU Bataraza

137. Prences Mae M. Langga



Proposed R&E Topics from the Colleges

No.	Topics	Colleges
I. HUMAN AND COMMUNITY DEVELOPMENT		
1	Assessment on Livelihood Competencies and Skills in Lanao Del Sur: Basis for Action Plan	CED - HE
2	Waste Literacy in Lanao Del Sur	CED - HE
3	CPALE Performance Assessment of Graduates	CBAA - Accountancy
4	Manifestation of Intergenerational Challenges in Workforce	CBAA - Management
5	The Relationship of Diversity, Equity, and Inclusion (DE&I) Initiatives on Employee Retention and Performance	CBAA - Management
6	The Women's Narrative on Gender-based Violence in Lanao del Sur	CPA - CD
7	Perception of Meranaw on LGBTQIA+ Inclusivity	CPA - CD
8	Training Needs Analysis Across People's Organization in Lanao del Sur as Basis for Livelihood Programs	CPA - CD
9	Assessment of the Integration of Anti-OSAEC (Online Sexual Abuse and Exploitation of Children) Modules in the OBE-dized BS Social Work Curriculum: A Multi Case Study	CPA - SocialWork
10	Interprofessional Collaboration in Working with OSAEC Victim-Survivors; Gaps, Challenges, Levels of Participation: The Case of Lanao del Sur	CPA - SocialWork
11	Mainstreaming Gender and Development in the Higher Education Institutions (HEIs): A Comparative Study of the Mindanao State University - Marawi Campus and Selected System Campuses	CPA - SocialWork
12	Innovations and Strategies in Service Delivery: The Case of BARMM - MSSD	CPA - SocialWork
13	Peace Initiatives Among Married Women in the Municipality of Maigo, Lanao del Norte	MSU MSAT
14	Duwaya, its effect on inheritance in Shariah law	Shariah Center

15	Cultural studies vis-à-vis to any of the branches of Philosophy (e.g. epistemology, phenomenology)	CSSH - Philosophy
16	Women and their role in Meranao society or in the Bangsamoro	CSSH - Philosophy
17	Profiling and Capability Building of Women in Some MNLF/MILF CAMPS of Lanao Sur	IPDM
18	Profiling and Capability Building of the Out of School Youth in Some MNLF/MILF CAMPS of Lanao Sur	IPDM
19	Organization of Cooperatives at some Marginalized Areas of Lanao SUR	IPDM
20	Data Analytics and Visualization of School Retention Policy	CICS - DIS
21	Kapamangdao: A Teaching Pedagogies and Assessment for Junior HighSchool Teachers of Marawi City National HighSchool	CED - DST
22	In Service-Training on Teaching Pedagogies and Assessment for Junior High School Teachers of Marawi City National HighSchool	CED - DST
23	Systematic Review of Common Social Studies topics in Undergraduate and Graduate Theses at MSU Marawi City: 2010-2022	CED - DST
24	Exploring the Lived Experiences of BSED Math Students in Research Writing: An Interpretative Phenomonology Study	CED - DST
25	Reconciliation in the Post-Conflict Society: <i>Prospects and Challenges in the Province of Lanao Del Sur</i>	CPA - PA
26	Research on Indigenous People and Local Code in the Bangsamoro	CPA - PA
27	Transformative Leadership and Gender Inclusivity in the Bangsamoro	CPA - PA
28	Conflict Resolution in the Context of BARMM	Graduate Studies
29	Post war narratives in BARMM	Graduate Studies
30	The role of Indigenous people in the in Peace Building in Mindanao	Graduate Studies
31	The Ideologies of the Meranaw's in various literary forms	Graduate Studies
32	the evolution of meranaw values and culture	Graduate Studies
33	Development and Validation of Science and Math Instructional Materials	ISED
34	Assessment of Math and Science Education Status in BARMM	ISED
35	Developing a Policy Framework for School Fund Management in BARMM: A Review of Existing Policies and Practices	CED - Grad Educ
36	Developing a strategic plan for improving the quality and relevance of higher education in BARMM.	CED - Grad Educ
37	Examining the impact of social and cultural factors on educational outcomes in BARMM: Implications for policy and practice	CED - Grad Educ
38	Assessing the Implementation of the Elementary School Curriculum in Lanao del Sur: A Study on Elementary Teachers as Curriculum Implementers	CED - Grad Educ
39	Exploring the Construction of Self of Novice Meranao School Principals in Lanao Del Sur through Narrative Analysis	CED - Grad Educ
40	Training of Trainers on race against suicide: A gatekeepers' training in schools	CED - Grad Educ

41	Assessment on guidance counselors/advocates competencies and skills	CED - Grad Educ
42	The Use of Traditional Oral Literature in Promoting Reading Skills among Meranao Children: An Ethnographic Study	CED - Grad Educ
43	The Role of Language Attitudes in Reading Motivation among Meranao Adolescent Readers: A Case Study	CED - Grad Educ
44	The role of Ulama on Peace and Development	KFCIAS - Islamic Studies
45	The Influence of English Language to the LGBTQIA+ Lingo	Languages Center
46	Assessment on Livelihood Competencies and Skills in Lanao Del Sur: Basis for Action Plan	CED -Home Economics
47	Waste Literacy in Lanao Del Sur	CED -Home Economics
48	Healthy Parenting: Parent Education and Awareness Programs for the Families of Piagapo, Lanao del Sur	CED - Elem Educ
49	Production and Utilization of Elementary Learning Materials for Maranao Stories: A Qualitative Development of Elementary Learning Materials	CED - Elem Educ
50	Needs Assessment of the Child Development Centers of BARMM	CED - Elem Educ
51	Assessment of Grade 12 National Achievement Test (NAT) Results of Lanao Del Sur/BARMM	MSU-ISED
52	Readiness of the SHS in ICT Track	MSU-CICS
53	Determining the Programming interest Among SHS Students	MSU-CICS
54	Acquisition of a Customized Van used as Computer Laboratory	MSU-CICS
55	Intensive Trainings in Math & Sciences Senior High School Teachers in Lanao Del Sur	MSU-ISED
56	Intensive Trainings in Math & Sciences for High School Teachers in Lanao Del Sur	MSU-ISED
57	Capacity Building of Social Workers/Services Providers	MSU-CPA
58	Awareness Raising Amongst Youth & Children of LSA on Anti OSAEC(Online Sexual Abuse & Exploitation of Children)	MSU-CPA
59	Utilization of Learning & Teaching Support Materials for University College Offering Social Studies	MSU-CED
60	Exploring Araling Panlipunan Teachers' Practices & Perspectives on inquiry-Based Teaching in BARMM: A Qualitative Study for Policy formulation	MSU-CED
61	Improvisation & Design Thinking in Language, & Science & Math Teaching	MSU-CED
62	Fostering Healthy Parenting: Parent Education Programs for the Families of Piagapo, LDS	MSU-CED
63	Need Assessment of the Child Development Centers (CDC) of BARMM: Basis for An Intervention Program	MSU-CED

64	Maranao Storytelling Today's Generation from the Perspective of the Parents & Children: A Qualitative Study	MSU-CED
65	Need Assessment of the Deped Elementary School at Barangay Condong	MSU-CED
66	Literacy Program for Elementary Students in Need	MSU-CED
67	Literacy Program for Parents With Elementary Children in Need	MSU-CED
68	Training Basic Use of Arduino to Senior High School Students of Lanao Del Sur	MSU-CNSM
69	Exploring Principles of Multi-Cultural Social Development Through the Allocation of Indigenous People's Scholarship Program in Mindanao State University-Marawi	MSU-CSSH
70	Nurturing Kids in the Margins: Bridging for a Better Future	MSU-OVPAA / GAD
71	Senator Blas Ople Building Renovation	MSU-SWA
72	Integration of Selected Physical Education Activities in Madrasah Curriclum	MSU-CSPEAR
73	Strengthening Barangay Sports Program as A Vehicle for Peace & Development	MSU-CSPEAR
74	Bangsamoro History: Lecture Series a. Lecture Series on the Bangsamoro History (Academic institutions in Lanao, ARMED Gov't Personnel assigned in Lanao, Local Government Unit)	MSU-CSSH
75	Seminar-Workshop With LGU on How to Properly Conduct Presentation and Refurbishing of Historical Or Cultural Structures for Functional Use	MSU-CSSH
76	Writing of HIS003 (History of Muslim Filipinos & Indigenous People of MinSUPALA) Textbook to Be Utilized By MSU-System and to Introduce the Textbook in Other Colleges in Lanao	MSU-CSSH
77	for Richer of for Poorer: "Exploring the Effectiveness of Existing Governing Policies in Promoting Effective University Research & PLGU Development Collaborating"	MSU-CSSH
78	Meranaw: Mula Marawi Seige, Pandemya, Hanggang Pagbangon	MSU-CSSH
79	Post-Marawi Siege: Youth Political Participation in Peacebuilding	MSU-CSSH
80	Capacity Building for Women, Peace and Security	MSU-OVPAA / GAD
II. CULTURE, TOURISM & ARTS		
81	Memory Documentation of the MILF Experiences in the Struggle for Self determination	CSSH - History
82	Bangsabae: the role of MILF women in the Bangsamoro struggle	CSSH - History
83	the history of indigenous/ IP struggle for ancestral domain	CSSH - History
84	Researches on the Integration and Sustainability of Islamic accounting and Islamic Finance	CBAA - Accountancy

85	Socioeconomic Impact of Halal Industry in BARMM or Mindanao	CBAA - Economics
86	Halal Food Production and Sustainable Development: BARMM or Mindanao	CBAA - Economics
87	Value Chain Analysis of Halal Production: BARMM or Mindanao	CBAA - Economics
88	The Influence of Islamic Work Ethics to HRM Practice	CBAA - Management
89	Social Responsibility Performance of Business Enterprises as Basis for Islamic CSR Framework	CBAA - Management
90	Halal HRM Practices in BARMM	CBAA - Management
91	BARMM and Meranaw Literature	CSSH - English
92	ASEAN Literature	CSSH - English
93	World Literature	CSSH - English
94	Cultural Studies	CSSH - English
95	<i>Antonaa i ngaran ka?</i> Establishing a compendium of Maranao names for selected indigenous native flora and fauna of Lanao del Sur.	CFES - EnviSci
96	Language Inclusivity in Social Services Delivery: The Case of BARMM-MSSD	CPA - SocialWork
97	Multiculturalism in the Higher Education Institution (HEIs): A Review on the Cultural Diversification of Mindanao State University - Main Campus	CPA - SocialWork
98	Ethical analysis and evaluation on social issues or problems	CSSH - Philosophy
99	Lanao del Sur Cultural Mapping and Documentation Analysis	MCHC
100	Culture and Language Dynamism: External Influences on Meranaw Culture and Language	MCHC
101	School of Living Tradition and Language Learning: Revival and Revitalization	MCHC
102	Traditional Uses and Knowledge of Indigenous Timber and Non-Timber Forest Products	CFES - Forestry
103	Inclusion of Selected Physical Activities In Madrasah Curriculum	SPEAR
104	Empowering ISAL and ALIVE teachers	KFCIAS - Teaching Arabic
105	Competency of ISAL Teachers in coping up with the mandates of MBHTE in the BARMM	KFCIAS - Teaching Arabic
106	Teachers' Development Programs	ISED
107	Sustainable Tourism Development	CHTM - Tourism
108	Cultural Tourism Studies	CHTM - Tourism

109	Halalness of Income Generation	KFCIAS - Islamic Studies
110	The role of Islamic Microfinance	KFCIAS - Islamic Studies
111	Ethnomathematics of BARMM	CNSM - Mathematics
112	Ecotourism/Sustainable tourism	MSU-CHTM
113	Food Waste Management at Restaurants	MSU-CHTM
114	Assessment on Ecotourism Potentials of Some Destinations in Lanao Del Sur	MSU-MSU-CHTM
115	Eco-tourism Potential Identification and assessment toward Livelihood Develop and Co-Management Approaches	MSU-CFES
116	Halal Food and Services, Food Innovations and Processing, Local Food Packaging, Destination Management, Tour Packaging and Local Tour Operation	MSU-MSU-CHTM
117	Establishment of a Model Halal-Based Integrated Organic Farm	MSU-COA
118	Post Harvest Practices and Challenges in Halal Agriculture	MSU-COA
119	Production and Commercialization of Halal Feeds for Poultry and Goats	MSU-COA
120	Performance of Free-Range Native Chickens Fed With Home-Made Halal Rations	MSU-COA
121	The Rise of Eco-Tourism Initiatives in Select Localities in Lanao Del Sur	MSU-CSSH
122	Water-Based Sports & tourism Promotion	MSU-CSPEAR
123	Perception on Sports Eco-tourism for Economic Development in the Province of Lanao Del Sur	MSU-CSPEAR
124	Cultural Tourism, Preservation of Custom and Tradition	MSU-CHTM
125	Lanao Stakeholder Consultative Meeting of the Meranaw Orthography	MCHC
126	Cultural Production, Documentation, and School Having Tradition Program to Projects and Researches	MCHC
127	Preservation of Maranao Cultural Heritage Through Sports and Games	MSU-CSPEAR
128	Meranaw Orthography Standardization	MSU-CSSH
129	Geolocation of tourist attractions of LDS - Cultural, Historical, Nature	MSU-CHTM
130	Utilization of Traditional Water Transportation System for Tourism	MSU-CHTM
131	Glocalization: Transcreation of BARMM indigenous Group's Culture in Venues for Competitive Representation	MSU-CSSH
132	Technology Transfer on Handloom Weaving and Other Maranaw Handicrafts Such as Ampas, Mamandiang and Others.	MSU-CWS
133	Establishing School of Living Tradition	MSU-OVPAA / GAD
III. LANGUAGE, MEDIA AND COMMUNICATION RESEARCH		

134	A Language Framework for Meranao, Maguindanao, and Tausog Using NLP	CICS - DCS
135	Theoretical Linguistics	CSSH - English
136	Applied Linguistics	CSSH - English
137	Communication Problems and Challenges among Local Government Unit Officials in Maigo: Basis for Provision of Communication Skills Training	MSU MSAT
138	Education in the ever-changing world (e.g. in the time of the pandemic)	CSSH - Philosophy
139	Media & digital literacy needs in various communities & groups (AKAP studies)	CSSH - C&MSD
140	Strategies in addressing organizational communication issues, problems & concerns	CSSH - C&MSD
141	Media content production, monitoring & evaluation and Artificial Intelligence (AI)	CSSH - C&MSD
142	Legal & ethical dilemmas in news & entertainment media content production	CSSH - C&MSD
143	Language Planning and Policy	Graduate Studies
144	Arabic Speaking Proficiency of ISAL Teachers	KFCIAS - Teaching Arabic
145	Challenges and Issues of Learning Tajweed (Arabic Phonology)	KFCIAS - Teaching Arabic
146	Contextualization of Science and Math Basic Education Curriculum	ISED
147	Ecolinguistics Paglalarawan ng mga Hayop sa Pabula bilang Tauhan: Isang Ekosopikal na Ebalwasyon (Animal Description in Fables as Character: An Ecosophical Evaluation)	CSSH - Filipino
148	Peace Linguistics Prosidyural na Komunikasyon sa <i>Kapasad sa Rido</i> : Isang Linggwistik na Pag-aaral Pangkapayapaan (Procedural Communication in <i>Kapasad sa Rido</i> : An Peace Linguistic Study)	CSSH - Filipino
149	Danao Languages Study Dokumentasyong Pangwika ng mga barayti ng Wikang Meranaw, Iranon at Maguindanaon (Language Documentation on Varieties of Meranaw, Iranon, and Maguindanaon Languages)	CSSH - Filipino
150	Women and Language Pagpapahalaga sa mga Babaeng Meranaw sa Pagdedesisyon: Isang Kritikal na Diskursong Analisis (Valuation on Meranaw Women in Decision Making: A Critical Discourse Analysis)	CSSH - Filipino
151	Filipino as Foreign Language and Education Debelopment ng Manwal sa Filipino bilang Banyagang Wika: Mga Pagsubok at Direksyon (Development of Manual in Filipino as Foreign Language: Challenges and Directions)	CSSH - Filipino

152	6. Translation and Culture Studies Paglilipat ng mga Palipat-dilang Poklor sa Teksto at Patungo sa Filipino: Isang Araling Pagsasalin (Transferring Oral Folklores into Text and into Filipino: A Translation	CSSH - Filipino
153	Linguistic Mapping of Subanen Communities in Buug, Zamboanga Sibugay	Languages Center
154	Language Attitude and Language Vitality of Maguindanao in Buug, Zamboanga Sibugay	Languages Center
IV. INDUSTRY, INNOVATION, INFRASTRUCTURE, ENERGY & EMERGING TECHNOLOGY		
155	The Potential of Windmill as Alternative Source of Energy and Power Generation in the Municipality of Maigo, Lanao del Norte	MSU MSAT
156	Development of Electronic Waste- Segregation Device	MSU MSAT
157	Designing and Developing Personal Protective Equipment for Fisherman in Municipality of Maigo	MSU MSAT
158	Smart School: Digital School Transformation	CICS - DIS
159	Student Mining Using K-Means Clustering: A basic for Improving Higher Education Marketing Strategies	MSU - LNAC
160	Species Composition, Diversity, and Habitat Assesment of Mangrove in Selected Coastal Barangay of Sultan Naga Dimaporo, Lanao del Norte, Philippines	MSU - LNAC
161	Potential of Different Fermented Juice as Foliar Fertilizer on the Productivity of Guatemala Grass	MSU - LNAC
162	Climate-Smart Agricultural Strategy in <i>Sakurab</i> (<i>Allium ampeloprasum</i>) Production	MSU - LNAC
163	Fish Catch Data and its Implication for Management of Small-scale Fisheries in Sultan Naga Dimaporo Lanao del Norte	MSU - LNAC
164	Nunungan's Local Leaders best Practices in Rido Settlement in Prevention of Extremist Ideologies	MSU - LNAC
165	Records Management System: An Innovation to Records Preservation	CSSH - LIS
166	Development of advanced materials	CNSM - Physics
167	Fabrication of deformable diffraction gratings for optofluidic applications	CNSM - Physics
168	Suitability mapping for renewable energy sources in Lanao del Sur	COE - Agri and Bio Eng
169	Lanao del Sur basaltic clay as clay liner for landfill construction	COE - Civil Eng
170	IoT-based Smart Waste Collection Bin	COE - Electrical
171	Design and Fabrication of Grinder and Compactor for Smart Waste Collection Bin	COE - Mechanical
172	Design and development of magnetic braking system	COE - Mechanical
173	Solar Energy/Renewable Energy Innovation	COE - DET
174	Material Production with Solid and/or Industrial Waste Aggregates	COE - DET

175	Material Fabrication (bamboo crafting, metal forging)	COE - DET
176	Development of Heat Recovery Equipment through the Use of Innovative Bricks Production	COE - DET
177	Industrial Application of Activated Carbon from Waste Materials (Plastics, Wood)	COE - DET
178	Risk Management Strategies in Construction Projects	COE - DET
179	Sustainable Construction Practices and their Impact on Project Performance	COE - DET
180	Assessment of Risk and Investigation of Safety Management Systems in Construction.	COE - DET
181	Innovative Contract Models in Construction	COE - DET
182	Recycling Municipal and Agricultural Waste into Energy, Fertilizers, Food and Economic Feasibility of Lanao del Sur: A Review	MSU-CED
183	Design and Development of Prototype Surveillance Car for Disaster Response and Search and Rescue Operations	MSU-COE
184	Design and Development of Plastic Garbage Grinder and Compactor	MSU-COE
185	Design and Development of Autonomous Garbage Collector in Lake Lanao	MSU-COE
186	Exploration of Sustainable Materials as Substitute to Plastics from Packaging industry	MSU-COE
187	Design of Value-Added Products from Waste Materials	MSU-COE
188	Digitalization of Community Profiling System Or “Hulagway App” in Lanao Del Sur	MSU-CPA
189	Salsila App: Social Network of Relations and Data Privacy” - to Establish Active Network Across the Province to introduce More Opportunities Such as: 1. Rido Settlement 2. Local Product Export	MSU-CICS
V. SUSTAINABLE ECONOMIC PRODUCTION, FOOD SECURITY & POVERTY ALLEVIATION		
190	Develop interventions program in improving Food Service Quality among food establishment in Lanao Del Sur	CED - HE
191	Support Studies to Business Enterprises and Government Agencies i.e Feasibility Studies; Operational Analysis; Accounting, Finance and Taxation needs of Enterprises	CBAA - Accountancy
192	Proliferation of Microfinance Institutions (MFI's) and its Socio-Economic Impact	CBAA - Management
193	Making of <i>Tapay</i> as a Substitute Yeast in Bread and Pastry Production	MSU - LNCAT
194	Tracking the Langkit Weavers in Lanao del Sur: A Basis for the Out-of-School Youths Training Program	MSU - LNCAT
195	Best Teaching Practices of Selected TVL Schools in Iligan and Cagayan de Oro Cities: A Basis for an Intervention Program	MSU - LNCAT
196	Fish population dynamics of commercially-important freshwater species of Lake Lanao	CFAS

197	Bio-chemical Evaluation of Breadnut (<i>Artocarpus camansi</i>) Seed as Replacement for Fish Meal in the Diet of Nile Tilapia (<i>Oreochromis niloticus</i>)	CFAS
198	Standardization of Processed Fishery Products in Lanao del Sur	CFAS
199	Agroforestry Potentials and Practices in Ranao River Basin	CFES - Forestry
200	Tourism Product Development (New and Existing Products)	CHTM - Tourism
201	Effects of the photons emitted by a laser on the growth and development of plants.	CNSM - Physics
202	Develop interventions program in improving Food Service Quality among food establishment in Lanao Del Sur	CED -Home Economics
203	Community Assessment on the farm practices of major crops, poultry and livestock production in Lanao del Sur	Col of Agriculture
204	Abaca Production Researches in Lanao del Sur	Col of Agriculture
205	Rice and Corn Varietal Improvement in Lanao del Sur	Col of Agriculture
206	Coffee Production in Lanao del Sur, BARMM	Col of Agriculture
207	Poultry and Livestock Production in Lanao del Sur, BARMM	Col of Agriculture
208	Automated aquaponics system	COE - Agri and Bio Eng
209	Biomass Utilization for sustainable products (packaging, films, etc)	COE- Chem Engr
210	Modelling of Crop Performance in Lanao del Sur as a response to the 1.5°C Climate Impact to the Province	MSU-CICS
211	Development and Implementation of a Nutritional Education Program of Lanao del Sur	MSU-CED
212	Training on Hatchery Breeding of Endemic Cyprinids	MSU-CFAS
213	Training a Hatchery and AquaCulture Production of Freshwater Finfish Species including Shrimp	MSU-CFAS
214	Conduct Lake Lanao Fish Stock assessment After Restocking/Fish Stock Enhancement Activities Undertaken by MSU	MSU-CFAS
215	Rehabilitation of Endemic Cyprinids	MSU-CFAS
216	Culture of <i>Macrobacrachium Rosenbergi</i> (Ulang)	MSU-CFAS
217	Establishment of Norwegian Fish Cages in Lake Lanao	MSU-CFAS
218	Community Outreach Program on the Construction of the Following: A. Backyard Fish Cage, B. Aquaponics System	MSU-CFAS
219	Community Outreach Training Programs on: A. Feed formulation, B. Feeding Management Protocols	MSU-CFAS
220	Assessment of Abaca/Banana Nursery and Production Areas for Virus Diseases Using FARMERS' Practice and ELISA Technique	MSU-COA
221	Conducting A Training for Farmers (Operators) on the Operation and Maintenance of Rice Machineries	MSU-COA

222	Conducting A Training for Farmers Engaged in Poultry Production on the Operation and Maintenance of Poultry Processing Machines	MSU-COA
223	Sweet Potato Value Chain Analysis for increased income and Food Security for Farmers in 5 Baranggays of 3 Municipalities of LDS, Marantao, Balindong and Saguwaran	MSU-COA
224	Appropriation of Farmers tools for Agriculture: A Solutions to Produce More on Grains (Rice and Corn) By Means of Machinery for Cultivating Well the Farm Land	KFCIASS
225	Ranao integrated Agri-Livelihood Program: Helping the Mranaos Rise Over the Rubbles of the Marawi Crisis and the Covid-19 Pandemic	MSU-COA
226	Establishment of Food Production Clinic in LDS	MSU-COA
227	Establishment of Bagsakan Center, Food Terminal and Agri-Trading Center	MSU-COA
228	Basic Food Safety Practices in Small-Scale Agribusiness Enterprises	MSU-COA
229	Different Food Products We Can Produce With Dodol	MSU-CNSM
230	Livelihood Programs to the Community on the Following Small Scale and Entrepreneurships and Trainings: Milkfish Deboning, Fish Polvoron, Fish Bottling, Standardization of Processed Fish Products, Packaging and Marketing Training, Monitoring and Evaluation, and Impact Assessment Analysis	MSU-CFAS
231	Project OME (Opportunities for Muslim Entrepreneurs): Skills Training, Market Linkage, Funding and Capitalization, Material Resources and Equipment, and Product Development (Innovation, Packaging, Branding, Trademark)	MSU-CBAA
232	Community Based Goat Upgrading Program: Natural vs. Artificial insemination	MSU-COA
233	Antimicrobial for Nanofiltered Potable Water for the Privilege of Lanao Del Sur	MSU-CNSM
234	Meranao Food Quality assessment Laboratory Center	MSU-CNSM
235	Livelihood Skills Training on Backyard Gardening and Food Processing and Baking Halal Products for the IDP's of Lanao Del Sur	MSU-CWS
VI. BIO-PHYSICO-CHEMICAL ENVIRONMENT		
236	Assessment of Animal Fauna in Key Biodiversity Areas of Lanao del Sur	CNSM - Biology
237	Microplastic Determination in Fishes of Lake Lanao, Philippines	CNSM - Biology
238	Nematode Community Structures in Selected Municipalities of Lanao del Sur	CNSM - Biology
239	Solid Waste Management in Marawi City	CNSM - Biology

240	Genotoxicity and Bio Assays of Maranao Medicinal Plants	CNSM - Biology
241	Natural resource valuation of carrying capacity assessment of various ecosystems in Ranao river basin	CFES - EnviSci
242	Research on Payment for Environmental Services in Lake Lanao	CPA - CD
243	Comprehensive Baseline Study on Consumption Pattern and Waste Disposal Practices of Communities in Lanao del Sur: Input for Ecological Plan	CPA - CD
244	Aquatic Biodiversity Information System for Lake Lanao	CICS - DIS
245	Biomass/Necromass Accumulation and Carbon Sequestration Potentials of Indigenous and Introduced Forest Species Across Various Forest Types	CFES - Forestry
246	Landuse/Land Cover Changes in Ranao River Basin for Disaster Risk Reduction Management and Interventions	CFES - Forestry
247	Rehabilitation of Degraded Ecosystems for Environmental Sustainability	CFES - Forestry
248	Environmental Profiling of Lanao del Sur for Sustainable Planning and Development	CFES - Forestry
249	Plastic Characterization in Ranao River Basin and Its Environs	CFES - Forestry
250	Eco-friendly Practices in Resolving Waste Management Problem in Marawi City	SPEAR
251	Phytochemical Screening of Indigenous Plant Samples in BARMM	CNSM - Chemistry
252	Volumetric flow rate and sediment analysis of river tributaries in Lake Lanao	COE - Agri and Bio Eng
253	Physico-chemical monitoring for water quality in lake lanao and its tributaries	
254	Enhanced Material Recovery Facility and Solid Waste Management for Lanao del Sur	
255	Liquefaction of lacustrine deposits in the urban areas around lake lanao	COE - Civil Eng
256	Air effluents monitoring system	COE - Electrical
257	Water Quality Monitoring and Human Health Risk assessment of Major River Tributaries and Lake Lanao	MSU-CNSM
258	Trophic Status and Aquatic Biodiversity assessment for Sustainable Wetland Freshwater Ecosystems in the Municipality of Lake Lanao	MSU-CFAS
259	Monitoring of Different Environmental Variables Using Satellite Data	MSU-CNSM
260	Solid Waste Management (Making Use of Plastics as A Shed	MSU-COA
261	Water Quality Monitoring Using Arduino Based Sensors	MSU-CNSM
262	Biodiversity of Littoral Zones in Lake Lanao	MSU-CED
263	Rural Biodiversity: Perception, Preference, General Awareness, and Threats in Some Locations of Lanao Del Sur	MSU-CED
264	Solid Waste and Water Quality Testing Center	MSU-COE
265	Heavy Metal Concentration in the Sediments of Lake Lanao	MSU-CFES

266	Biodiversity assessment in the Various Mountain Ranges of LDS towards Sustainable Resource Utilization and Conservation	MSU-CFES
267	Establishment of Demonstration Agro-forestry/ Forestry Areas/Forms as Showcases for Training and Replication in LDS towards Livelihood and Environmental Restoration Arboretum and Nature Appreciation”	MSU-CFES
268	Multitemporal Analysis of Land Use Covers Changes in LDS: A tool towards DRR Planning and Management	MSU-CFES
269	Eco-Friendly Practices to Resolve Waste Management Problem in Marawi and Lanao Del Sur	MSU-CSPEAR
270	Waste-Material Development as Prevention to Solid-Waste Problems in Our Locality	MSU-CSPEAR
271	Closed Season for Catching of Endemic Cyprinids	MSU-CFAS
VII. HEALTH RESEARCH & DEVELOPMENT		
272	Parasite Surveillance in Livestocks, Fishes and	CNSM - Biology
273	Emotional Competence and Job Resilience: Its Implication to Work Performance of Hospitality Industry Staff	MSU MSAT
274	Strengthening Grassroots Sports Program In Lanao del Sur	SPEAR
275	Water-based Sports and Tourism Promotion	SPEAR
276	Preservation of Meranao Traditional Sports and Games	SPEAR
277	Longevity Lifestyles Practices Among Centenarians	SPEAR
278	Functional Activities of the Various Solvents from the Indigenous Plant Extracts in BARMM	CNSM - Chemistry
279	Functional Activities of the Various Solvents from the Marine Species Extracts in BARMM	CNSM - Chemistry
280	Understanding of psychological and behavioral processes in mental health and mental health care	CSSH - Psychology
281	Predictors of various domains of health, well-being and resilience.	CSSH - Psychology
282	Development and Evaluation of clinical interventions for promoting positive mental health.	CSSH - Psychology
283	Guidance and Counselling Services in young, women and elderly	CSSH - Psychology
284	Mathematical Modeling on Spread of Infectious Diseases	CNSM - Mathematics
285	Mobile Community-Based Orthopedic Care/Center	MSU-CHS
286	Community Medical Center Focusing on Geriatric Care, & Women & Children’s Health	MSU-CHS
287	Health Condition of Families Living Near the Lake Lanao	MSU-CHS
288	Sport Grass-Roots Development Through ff: Sports Camp, Sports Academy, LDS Sports on Wheels	MSU-CSPEAR
289	Healthy Lifestyle Cultural Practices among Centenarian M’ranaos	MSU-CSPEAR

290	Preservation of Traditional Games and Sports of M'ranaos in Lanao Del Sur	MSU-CSPEAR
291	Strengthening the Grassroots Sports Programs in Lanao Del Sur	MSU-CSPEAR
292	Health Preservation & Fitness: Key to a Productional Community	MSU-CSPEAR
293	Escalate Tourism Through Mountaineering	MSU-CSPEAR
294	Realizing Healthy Lifestyle Through Summer Youth Sports Program (SYSP) a. Lanao Del Sur Community	MSU-CSPEAR
295	Status on Prevailing Household and Sanitation Condition in Lanao Del Sur: Basis for Action Plan	
VIII. LAW AND GOVERNANCE		
296	Balance of Payment Analysis of BARMM economy	CBAА - Economics
297	Shariah in the Philippines: Issues and Challenges	Shariah Center
298	Shariah law on Persons and Family relations cases on the Philippines	Shariah Center
299	Parliamentary System of Government	CPA - PA
300	The intergovernmental relations mechanism in the 3 tier level of government in the Philippines	CPA - PA
301	Digitalization and public service delivery in the BARMM	CPA - PA
302	Moral Governance and Ethics in Public Service	CPA - PA
303	Research study on the creation of Lake Lanao Development Authority	CPA - PA
304	WPS-SCS Dispute and Philippine Sovereignty	KFCIAS - IR
305	Emergence of Cultural Diplomacy as 4th Pillar of Philippine Foreign Policy	KFCIAS - IR
306	Global Leadership and International Cooperation	KFCIAS - IR
307	Integration of Technology to Math and Science Education	ISED
308	Issues on Muslim Personal Laws	KFCIAS - Islamic Studies
309	Digitalization of Government Services & Transactions in the Local Government Unit	MSU Buug - PA
310	Conflict Resolution of Subanen Tribe	MSU Buug - PA
311	Localization and Mainstreaming of SDGs	MSU Buug - PA
312	Sustainability of Cooperative in Lanao Del Sur	MSU-CBAA
313	Evaluating the Effectiveness of E-Government Systems in Government Offices of Lanao Del Sur: An Assessment of User Perceptions and System Performance	MSU-CICS
314	Building Resilience: A Climate-Smart Village Approach for Sustainability of Lanao Del Sur	MSU-CICS
315	Consultancy Services in the Formulation of CDP-ELA & LUCP	MSU-CPA
316	Participatory-Budgeting	MSU-CPA
317	Capacity-Building among Local Offices	MSU-CPA
318	Maximize & Encourage Employees to Pursue MPA Advance Study	MSU-CPA

319	Causes of Poverty in LDS: Its Implications to Socio-Economic Development of the Province	MSU-COA
320	Bespoke Policy Research Study on Creation of Lake Lanao Development Authority & Metropolitan Marawi City Convergence Alliance	IRLG
321	Public/ Private Partnership Training for LGU in Lanao Del Sur	IRLG
322	Workshop Focusing on A Measure to Address the Impact of the MandANas-GARCIA Ruling to the Lanao Del Sur LGU's	IRLG
IX. BASIC RESEARCH		
323	A Database Framework for the AMR Program	CICS - DCS
324	Innovative Math and Science Teaching Strategies	ISED
325	Computational investigation of the electronic, dynamical and vibrational properties of nanomaterials	CNSM - Physics
326	Analytical description of the electronic properties in novel two-dimensional materials	CNSM - Physics
327	Nonlinear dynamical analysis and information theory on the collective dynamics of biological active-matter systems	CNSM - Physics
328	Analysis of the mechanics of granular matter subjected to vertical and horizontal vibrations, and projectile impact	CNSM - Physics
329	Development of signal and image processing systems and algorithm	CNSM - Physics
330	Simulations in radiotherapy dosimetry and particle therapy applications	CNSM - Physics
331	Theory on Special Numbers and Polynomials and Its Applications	CNSM - Mathematics
332	Recent Advances in Analysis, Graph Theory, Differential Equations, and Algebra	CNSM - Mathematics
333	Theory on q and p-q Analogues	CNSM - Mathematics
334	Optimization and Machine Learning	CNSM - Mathematics
335	Permaculture Practices in Soil Erosion Control Using Native Tree Species and Artocarpus Species	MSU-COA
336	Soil Fertility assessment of Potential Agricultural Production Areas in Lanao Del Sur	MSU-COA
337	A Study on Exploration of Ethnobotanical Knowledge of Rural Community in Lanao Del Sur: Basis for Biodiversity Conservation	MSU-CED
338	Collection of Data Sets for Waste Utilization and Prevention	MSU-COE
339	Geotechnical Characterization of Soil in Areas in LDS: For Policy Recommendation	
340	Lake Lanao Ecosystem and Resource Economic Valuation: Use and Existence Values for Cultural Activities of Maranao Communities in LDS	MSU-CFES
341	Sustainable Development: Correlating Environmental Preservation initiatives to the Promotion and Strengthening of Local Agricultural Sectors	MSU-CSSH

342	Biomass and Carbon Sequestration Potential of Some indigenous Species in LDS: Livelihood and Climate Change Mitigation Potentials	MSU-CFES
343	Propagation of “Basudan” Tree Species: A tool towards “Basudan” industry Sustainability	MSU-CFES
344	Environmental Profiling of LDS: A tool for Sustainable Planning and Development (Ridge to Reef Approach)	MSU-CFES
345	Impact Assessment of INREMP Implementation in LDS: A Way Forward	MSU-CFES
346	Self Life of Different Packaging on Turmeric Powder	MSU-COA
347	Ethnopharmacological Survey of Maranao Medicinals, Phytochemical Screening & Bio-Assay	MSU-CNSM
348	Lanao Del Sur Residents’ Awareness of Global Warming	MSU-ISED
349	Lanao Del Sur Residents’ Daily Life Practices for Global Warming Prevention	MSU-ISED
350	Exploring the Balance Between infrastructure-Building and Local Economic Development	MSU-CSSH
X. DISASTER RISK REDUCTION & CLIMATE CHANGE ADAPTATION		
351	Environmental and social vulnerability assessment of various communities in RRB: implications in climate change adaptation and DRR planning and management	CFES - EnviSci
352	Unveiling the Resilience of Meranao Communities in Lanao del Sur: Embracing Indigenous Knowledge System for Effective Disaster Preparedness and Management	CPA – CD
353	Disaster Preparedness and Resilience	CPA – PA
354	An Exploratory Study on the Disaster Preparedness	CSSH - LIS
355	The Emergence of Students' New Learning Styles and Preferences: Its Impact to the Library Instructions and Services	CSSH - LIS
356	Islamic Ethics on Sustainable Development in Zero-Waste	KFCIAS - Islamic Studies
357	Mathematical Modeling on natural phenomena	CNSM - Mathematics
358	Forecasting and Theory on Probability	CNSM - Mathematics
359	Flood disaster risk reduction/climate change adaptation in low lying areas around lake lanao	COE - Civil Eng
360	Sensors application for early warning and instrumentation	COE - Electrical
361	Design and Development of Prototype Arduino-based remote controlled surveillance for Search and Rescue Operation	COE - Mechanical
362	Early Warning System using Emerging Technologies for Flooding Detection and Prediction	MSU-CICS
363	Training/Seminar on Landslide investigation and Slope Protection	COE

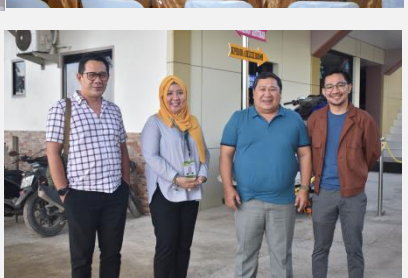
364	Seminar on Ground Improvement for the Mitigation of Natural Hazards	COE
365	Environmental and Social Vulnerability assessment in LDS: Fundamental for DRR Planning and Management	MSU-CFES
366	An assessment on the Provincial Risk Reduction Management in Responding to Disasters This Will Be A Policy assessment Research	MSU-CSSH



Documentation











OFFICE OF THE VICE CHANCELLOR FOR
RESEARCH, EXTENSION, AND DEVELOPMENT

